

Regional District of Bulkley Nechako - Smithers Agricultural Land Use Inventory - 2013

MAP 3 - AVAILABILITY OF LAND FOR FARMING

Land Status with Respect to Farming

- Actively farmed
- Farming support
- Unavailable for farming - land use
- Unavailable for farming - land cover
- Limited potential for farming - site limitation
- Available & with potential for farming

Land Cover type

Available and with potential for farming

- Unused field crops
- Non Built or Bare
- Managed vegetation
- Natural & Semi-natural vegetation

Used for grazing

- Natural pasture

Parcels

- Surveyed
- Not surveyed

Agricultural Land Reserve

- Boundaries (2012)
- Boundaries (2013)

Municipalities

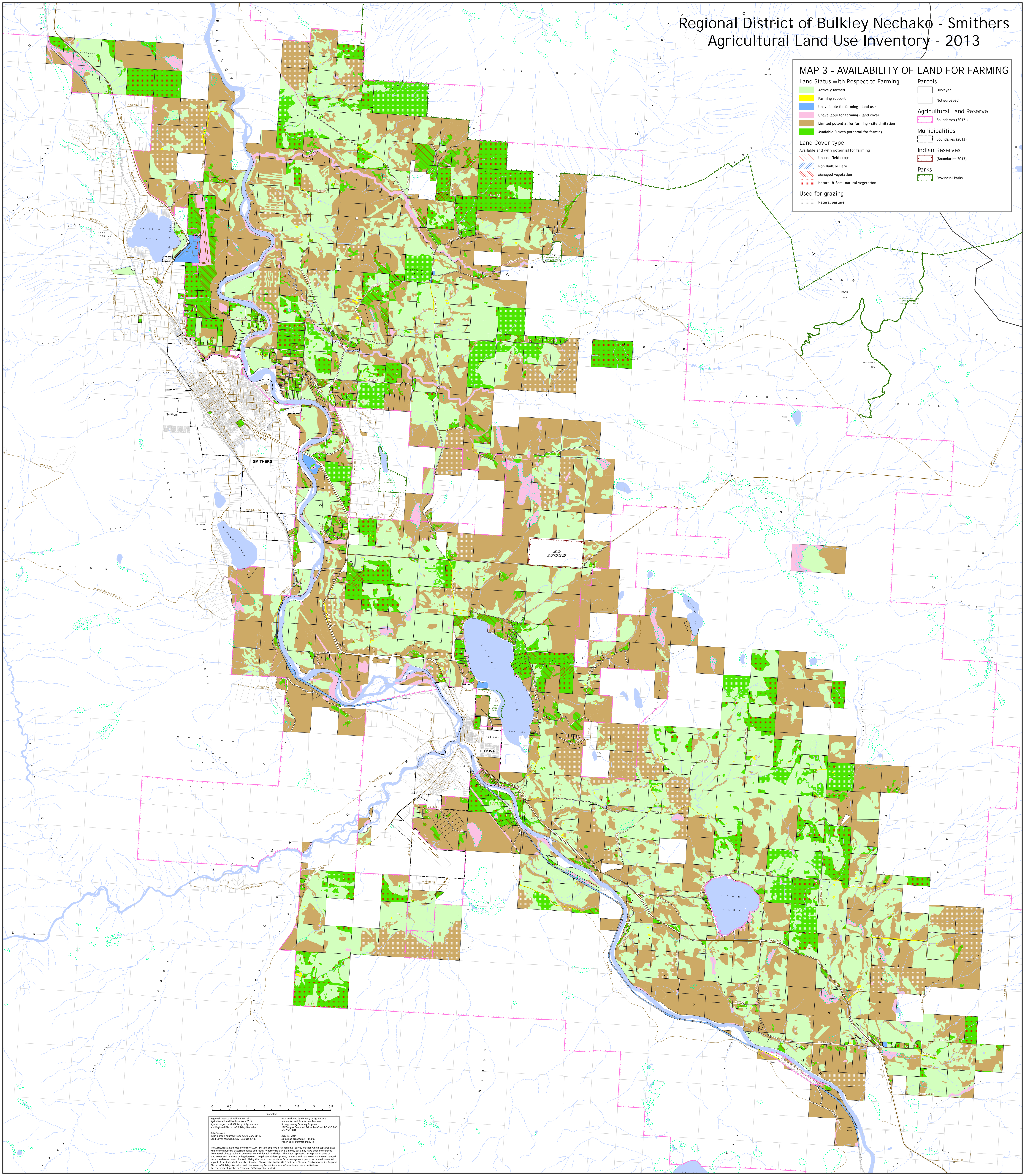
- Boundaries (2013)

Indian Reserves

- (Boundaries 2013)

Parks

- Provincial Parks



0 0.5 1 1.5 2 2.5 3 3.5
kilometers

Also produced by Ministry of Agriculture
Agricultural Land Use Inventory 2013
A joint project with Ministry of Agriculture
and Regional District of Bulkley Nechako.

Map Source:
Satellite imagery sourced from ICES in Jan. 2013.
Land Cover (current data) August 2012.

Map prepared by Ministry of Agriculture
Innovation and Adaptation Services
1100 Highway 97, Kamloops, BC V2C 2K3
403 526 3000

July 30, 2014
Map scale: 1:25,000
Map sheet: 34C39

The agricultural land use inventory (ALUI) system employs a "weighted" scoring method which captures data visible from publicly accessible lands and roads. Where visibility is limited, data may have been interpolated from aerial photography in consultation with local knowledge. This data represents a snapshot in time of land cover and land use on legal parcels. Long period observations, land use and land cover may have changed since the dataset was collected. Users are encouraged to verify measurements on ground or environmental data from historical aerial photography for the 2013 inventory. Other locations are also available in the Regional District of Bulkley Nechako Land Use Inventory Report for more information on data limitations.
<http://www.agric.gov.bc.ca/imagery/agsi/agsi.html>