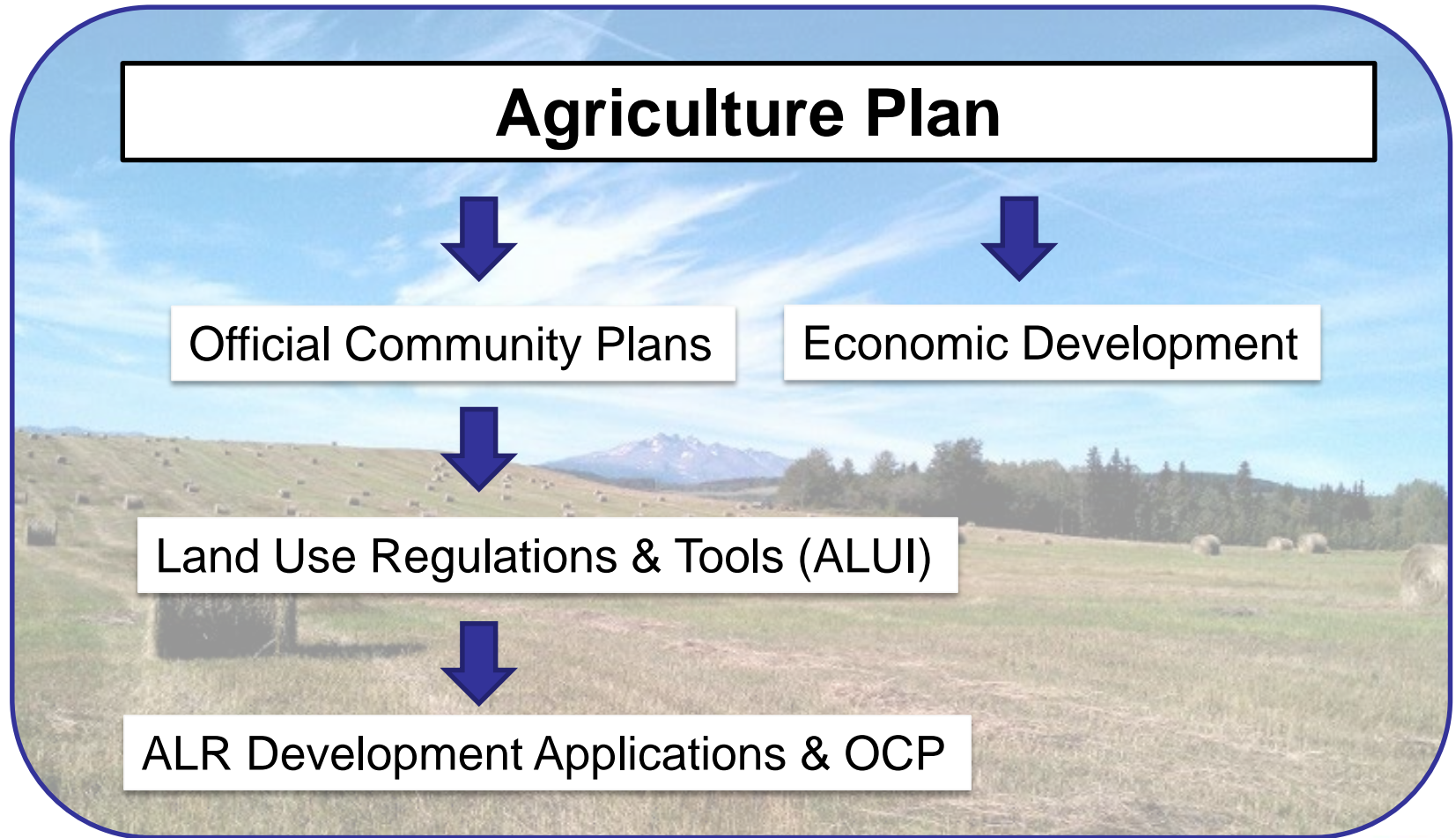


Regional District of Bulkley-Nechako Agricultural Land Use Planning



*“A WORLD OF OPPORTUNITIES
WITHIN OUR REGION”*

Presentation Overview



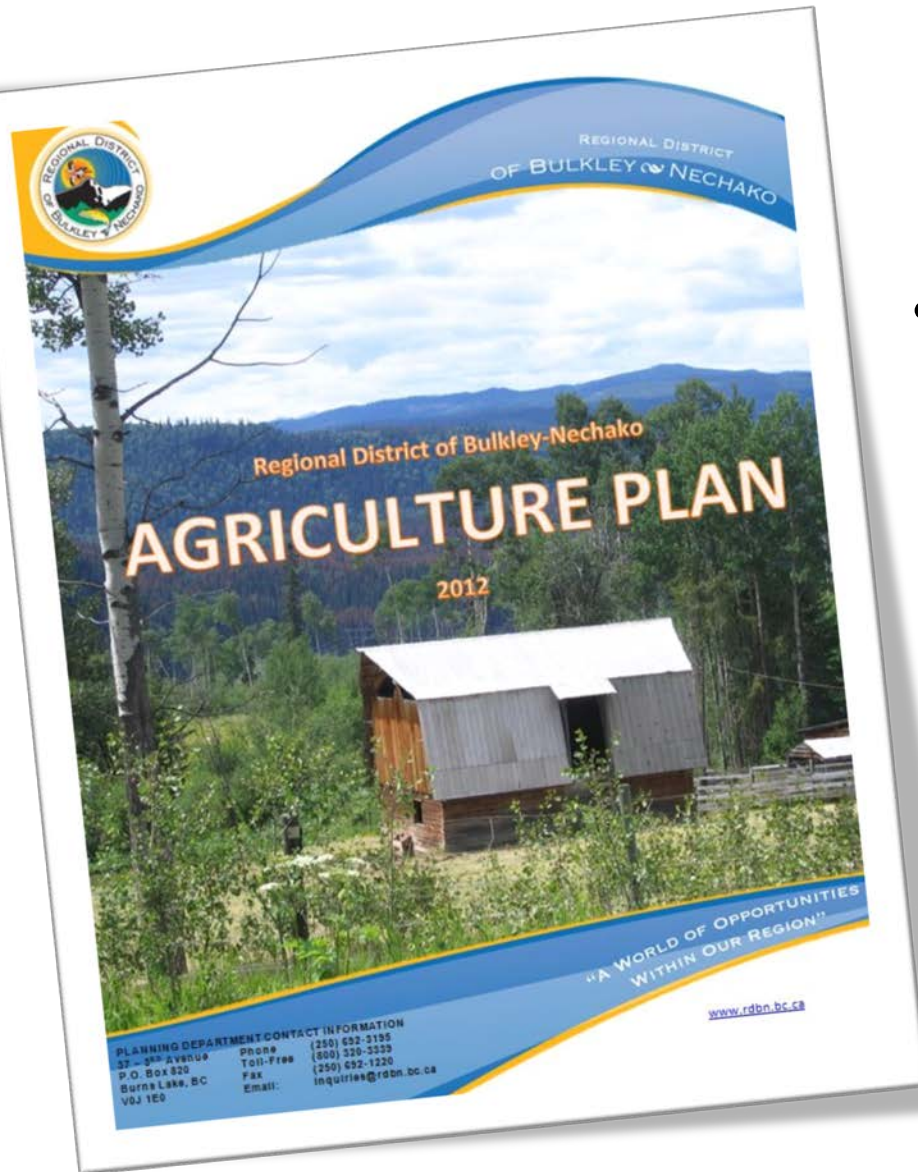
“A WORLD OF OPPORTUNITIES
WITHIN OUR REGION”

Why Plan for Agriculture?



“A WORLD OF OPPORTUNITIES
WITHIN OUR REGION”

Agriculture Plan



Strategic planning document



Plan developed with input from

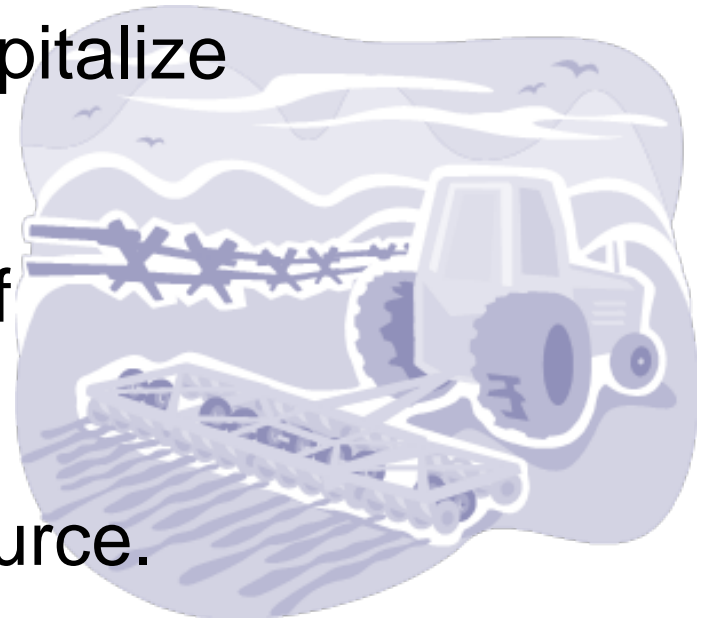
- Agriculture Plan Working Group;
- Consumer & Producer Surveys;
- Regional Workshops, and;
 - Referrals to Agencies, Stakeholders & Organizations.



The Plan's development process facilitated dialogue between the farming community and local government.

Agriculture Plan - Goals

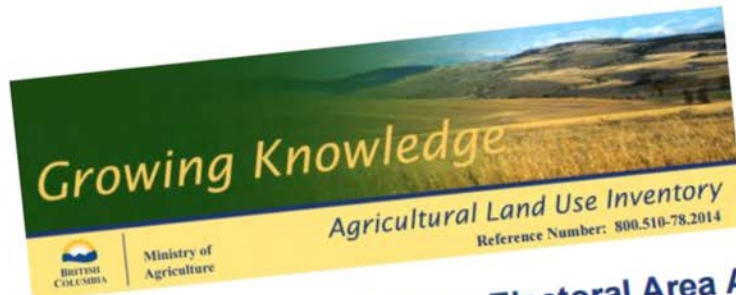
- Identify the constraints and opportunities
- Minimize constraints and capitalize on opportunities
- Increase the consumption of local foods.
- Provide an information resource.



“A WORLD OF OPPORTUNITIES
WITHIN OUR REGION”

Agricultural Land Use Inventories

- Direct action item identified in the Agriculture Plan
- Not a regulation but a resource
- RDBN Planning Department and the Ministry of Agriculture (MoA)
- Objective to develop a comprehensive inventory of agricultural land use surrounding the municipalities of Smithers and Vanderhoof. (Electoral Areas A and F).



Smithers, Telkwa, Electoral Area A
Regional District of Bulkley-Nechako
Summer 2013



Strengthening Farming Program
British Columbia Ministry of Agriculture

August 6, 2014

Inventory Tools

The ALUI consists of two reports (one for each area) and ten maps (five for each area).

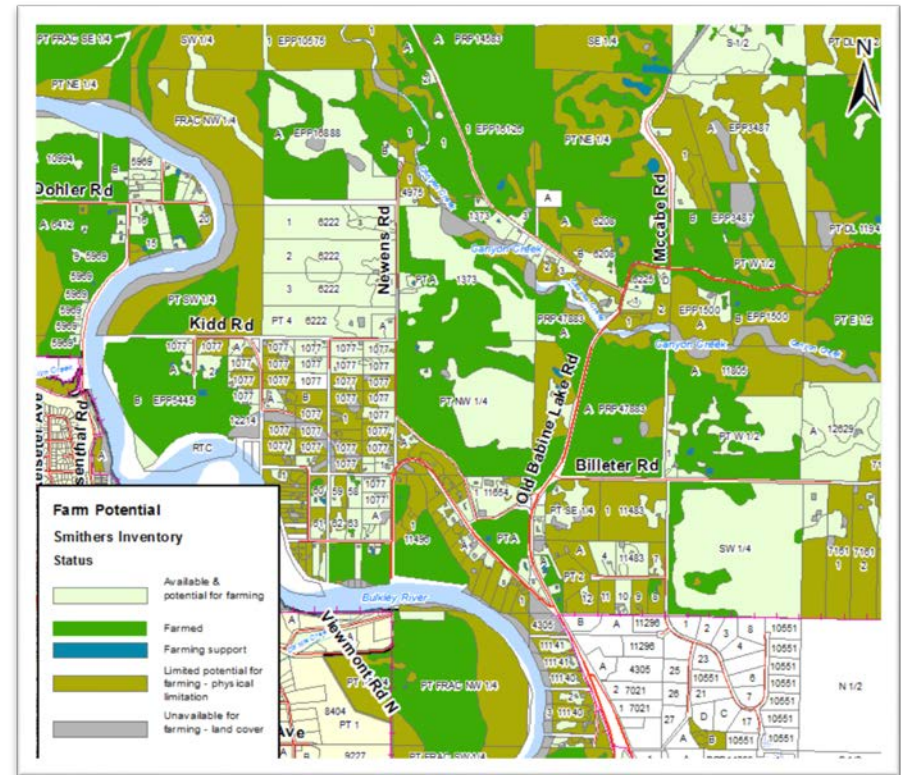
Map 1. Land cover & farmed area

Map 2. Land use & farm use

Map 3. Availability of land for farming

Map 4. Farming activities

Map 5. Condition of ALR lands



Available on our website at:

<http://rdbn.bc.ca/planning-department/land-useplanning/planning-studies/agricultural-land-use-inventory>



“A WORLD OF OPPORTUNITIES
WITHIN OUR REGION”

Agriculture Plan Guiding Policy

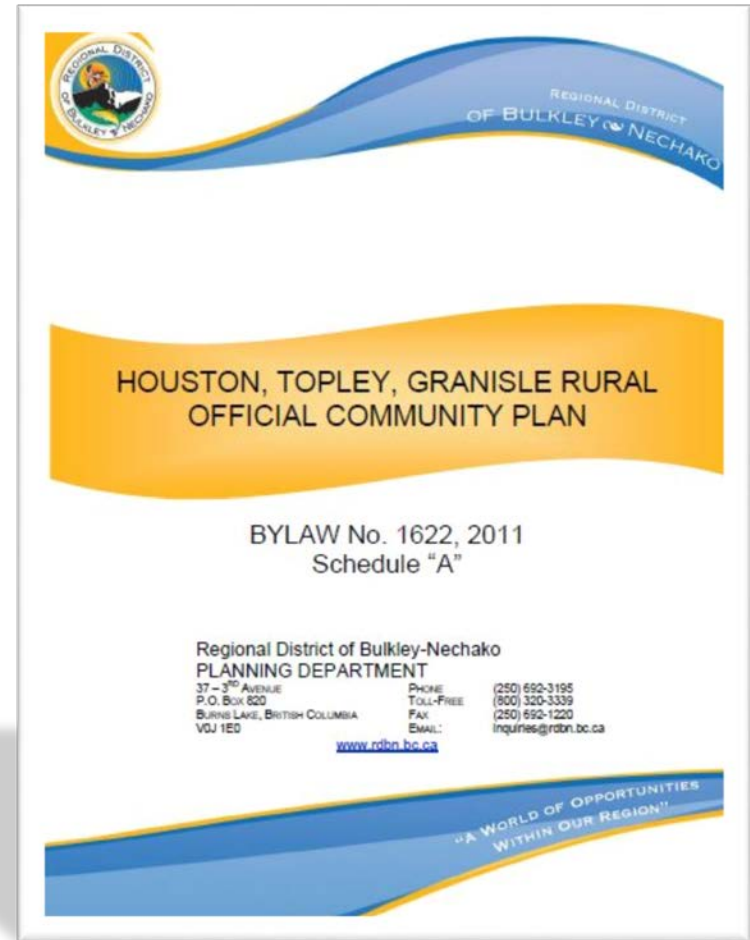
“ The RDBN should continue with its efforts to protect and preserve farm land and soil having capability for agricultural purposes through the restriction of subdivision, and limited encroachment of non-farm uses. ”



*“A WORLD OF OPPORTUNITIES
WITHIN OUR REGION”*

Official Community Plans (OCP)

- OCPs guide decisions about planning and land development.
- Authorized by the *Local Government Act*.
- An OCP is a bylaw and contains general statements regarding the desired future character of the plan area, and where certain types of land uses should occur.



Official Community Plans (OCP)

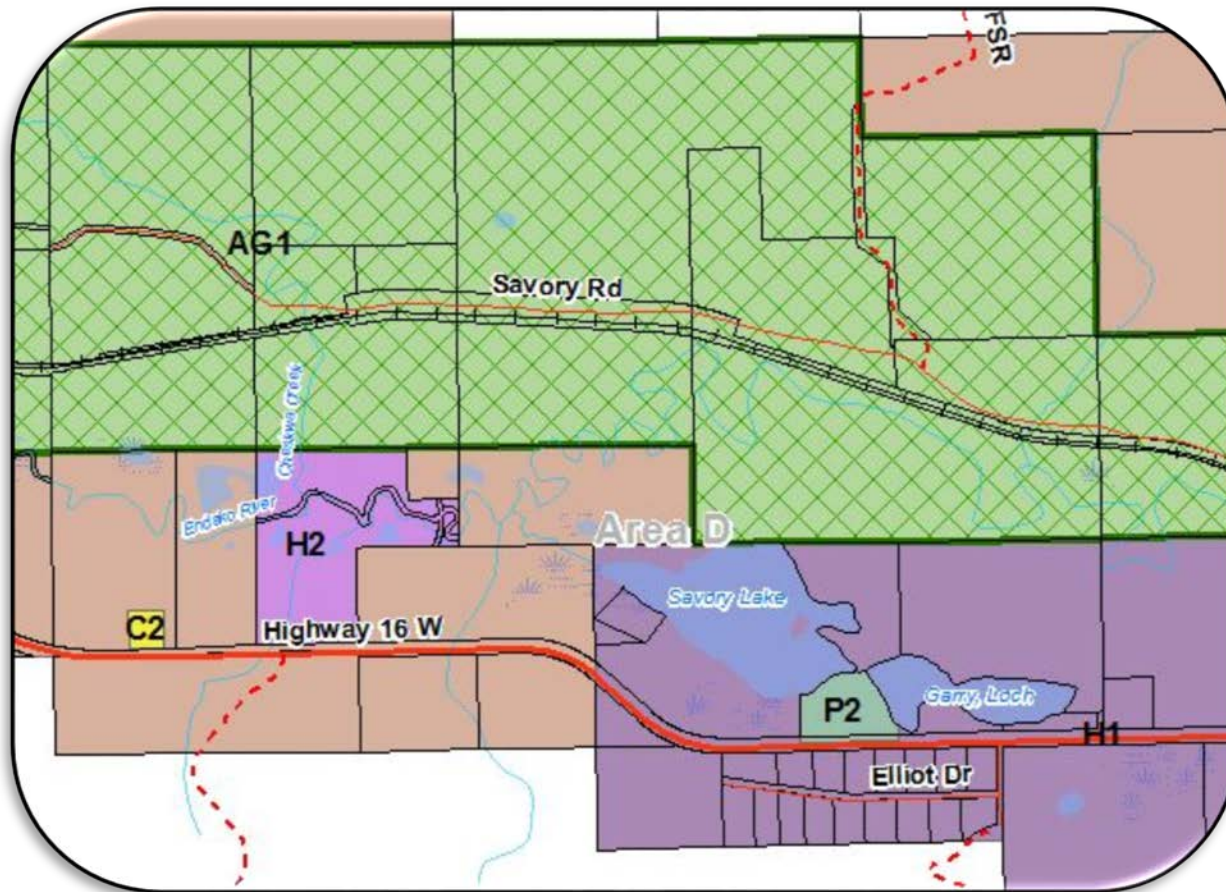
2.1 General Plan Vision

“... Maintaining the viability of the area’s agricultural sector by encouraging and promoting agriculture, resisting the intrusion of residential development into agricultural areas, and discouraging the loss of land from active agricultural use, is recognized as being critically important.”

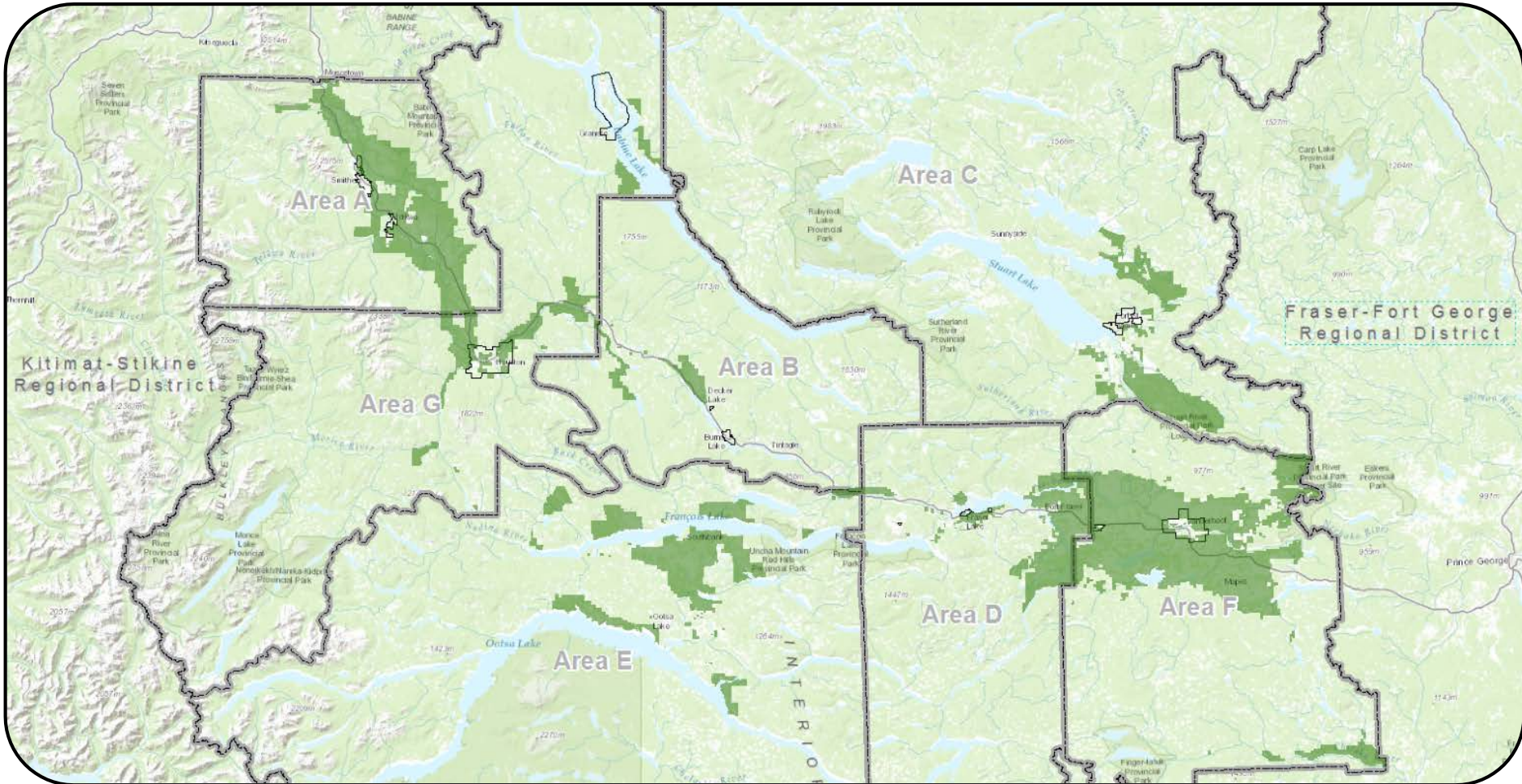


*“A WORLD OF OPPORTUNITIES
WITHIN OUR REGION”*

Zoning



Agricultural Land Reserve

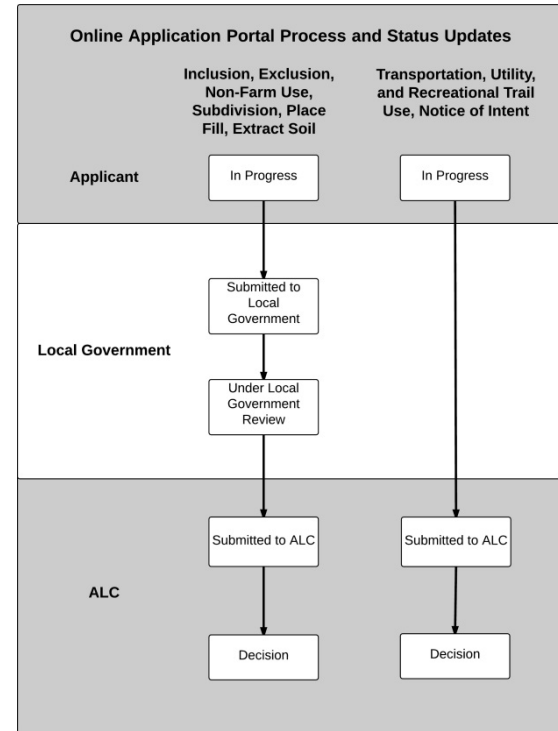


ALR Applications

Application Types

- Application for Subdivision (including Homesite Severance Applications)
- Non-farm Use Applications (including applications for additional dwellings)
- Exclusion applications
- Inclusion applications.

Application Process



Thank you!



*“A WORLD OF OPPORTUNITIES
WITHIN OUR REGION”*