

Regional District of Bulkley Nechako - Smithers Agricultural Land Use Inventory - 2013

MAP 5 - CONDITION OF ALR LANDS

Parcel Size Category (ha)

- < 1
- 1 - 2
- 2 - 4
- 4 - 8
- 8 - 16
- 16 - 32
- 32 - 64
- 64 - 128
- >> 128

Land Use with Respect to Farming
Displayed in white on the map

- Unavailable for farming
- Used for farming
- Used for grazing

Parcels

- Surveyed
- Not surveyed

Agricultural Land Reserve

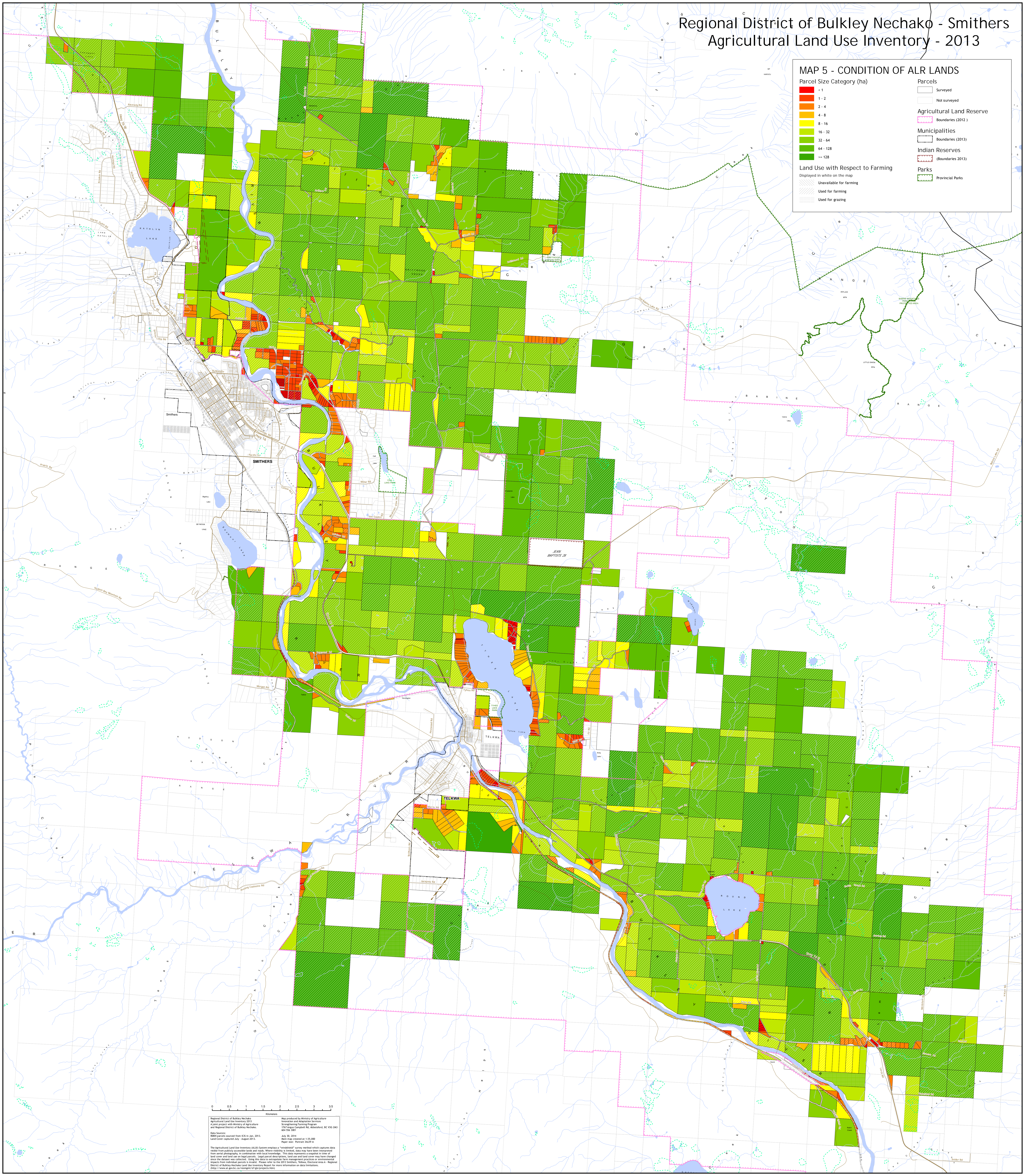
- Boundaries (2012)
- Boundaries (2013)

Municipalities

- Boundaries (2013)

Indian Reserves
(Boundaries 2013)

Parks
Provincial Parks



Regional District of Bulkley Nechako
Agricultural Land Use Inventory 2013
A joint project with Ministry of Agriculture
and Food of British Columbia
and Regional District of Bulkley Nechako.

Map prepared by Ministry of Agriculture
Inspection and Adaptation Services
110 Highway 97, Kamloops, BC V2C 2N2
604 526 3200

Date Sources:
Parcel boundaries sourced from ICES in Jan. 2013.
Land cover sourced from August 2012.

July 30, 2014
Map scale: 1:25,000
Map projection: UTM Zone 12N

The Agricultural Land Use Inventory (ALUI) system employs a "weighted" scoring method which captures data visible from publicly accessible lands and roads. Where visibility is limited, data may have been interpolated from aerial photography in consultation with local knowledge. This data represents a snapshot in time of land cover and land use on legal parcels. Long period observations, land use and land cover may have changed since the dataset was collected. Users are encouraged to use the map as a general guide to agricultural land use and not as a legal document. For more information on data limitations, please contact the Regional District of Bulkley Nechako Land Use Inventory Regulator for more information on data limitations.
<http://www.agric.gov.bc.ca/inspections/als/index.html>