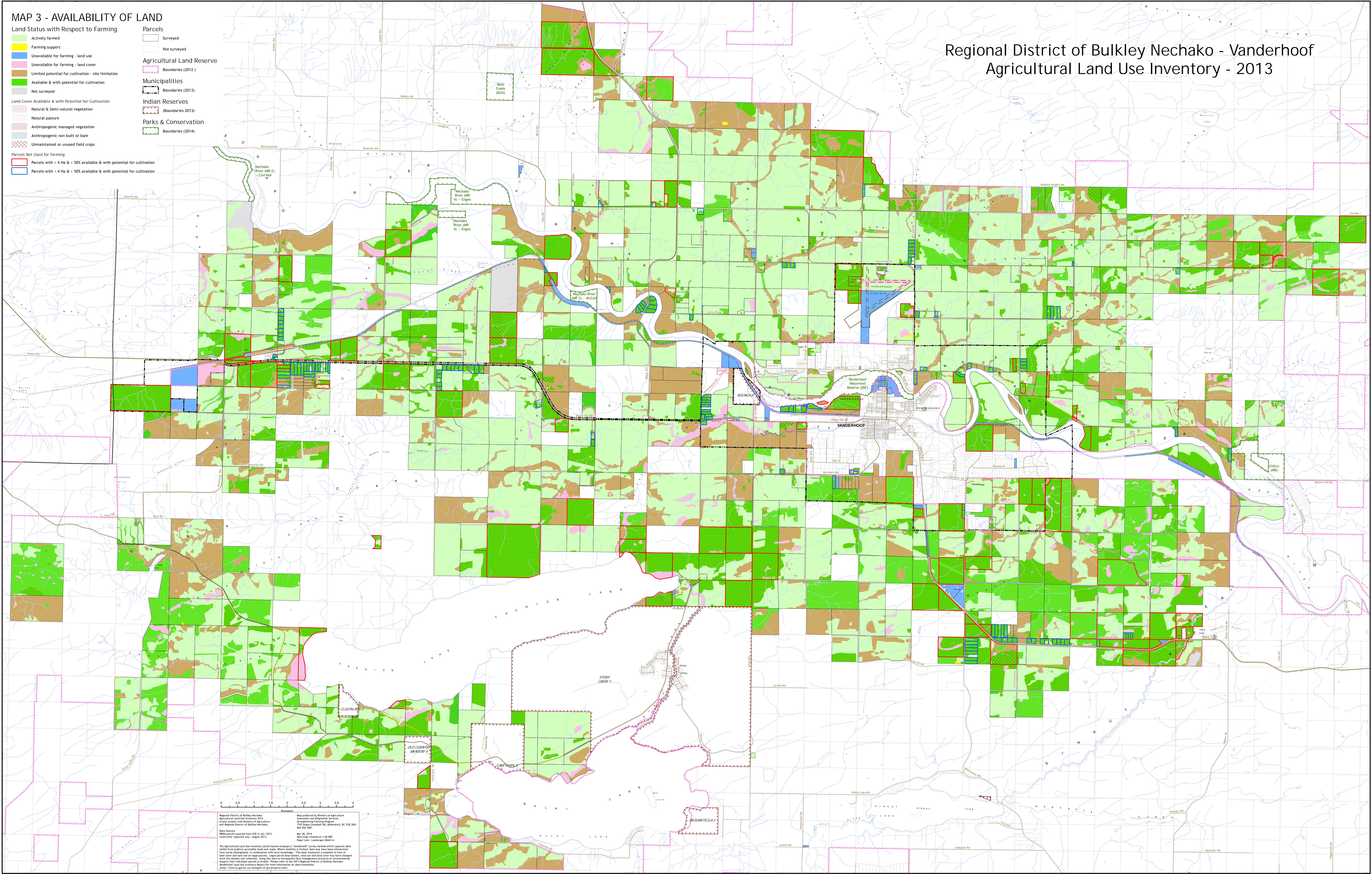


MAP 3 - AVAILABILITY OF LAND

- Land Status with Respect to Farming**
- Actively farmed
 - Farming support
 - Unavailable for farming - land use
 - Unavailable for farming - land cover
 - Limited potential for cultivation - site limitation
 - Available & with potential for cultivation
 - Not surveyed
- Land Cover Available & with Potential for Cultivation**
- Natural & Semi-natural vegetation
 - Natural pasture
 - Anthropogenic managed vegetation
 - Anthropogenic non built or bare
 - Unmaintained or unused field crops
- Parcels Not Used for farming**
- Parcels with > 4 Ha & > 50% available & with potential for cultivation
 - Parcels with < 4 Ha & > 50% available & with potential for cultivation

- Parcels**
- Surveyed
 - Not surveyed
- Agricultural Land Reserve**
- Boundaries (2012)
- Municipalities**
- Boundaries (2013)
- Indian Reserves**
- Boundaries (2013)
- Parks & Conservation**
- Boundaries (2014)

Regional District of Bulkley Nechako - Vanderhoof Agricultural Land Use Inventory - 2013



Regional District of Bulkley Nechako
Agricultural Land Use Inventory 2013
A joint project with Ministry of Agriculture
and Regional District of Bulkley Nechako
Data Source:
RSR parcels sourced from KIS to Jan. 2013.
Land Cover: Canvec 1A1, August 2013.

Map produced by Ministry of Agriculture
Innovation and Adoption Services
Strengthening Farming Program
1100 Lakeshore Blvd., Vancouver, BC V5C 2M1
604-566-5001
Map No. 2013
Map Date: created at 1:18,000
Print Date: September 2013

The Agricultural Land Use Inventory (ALUI) System employs a "weighted" survey method which captures data visible from publicly accessible lands and roads. Where visibility is limited, data may have been interpreted from aerial photography in conjunction with local knowledge. This data represents a snapshot in time of land cover and land use on regional, local and provincial scales. Land parcel ownership, land use and land cover may have changed since the data was collected. Users are encouraged to refer to the Department of Agriculture and Food's Agricultural Land Use Inventory Report for more information on data limitations.
<http://www.alui.gov.bc.ca/reports/for-projects.html>