

Regional District of Bulkley Nechako - Smithers Agricultural Land Use Inventory - 2013

MAP 1 - LAND COVER & FARMED AREA

Farming potential	Parcels
Available & with potential for farming	Surveyed
Limited potential for farming	Not surveyed
Land Cover & Farmed Area	Agricultural Land Reserve
Farmed	Boundaries (2012)
Cultivated field crops	Boundaries (2013)
Farm infrastructure	Indian Reserves
Greenhouses & crop barns	(Boundaries 2013)
Anthropogenic (not farmed)	Parks
Managed vegetation	Provincial Parks
Built up - Settlement, Transportation, etc.	
Non Built or Bare	
Anthropogenic Waterbodies	
Natural & Semi-natural	
Vegetated	
Waterbodies & Wetlands	
Natural pasture or rangeland	
Irrigation	
Irrigated land	

IRRIGATION TYPE

Group - Type	Name
F	Surface
S	Sprinkler
W	Wheelline
G	Giant gun
Tg	Travelling gun
C	Centre pivot
Lp	Low pressure

IRRIGATION MAP LABEL

Group - Type / Type

Example of a Label
S-WI/G-Tg

S - Sprinkler
WI - Wheelline
/ - Secondary system
G - Giant gun
Tg - Travelling gun

Example of a Label
C-Lp

C - Centre pivot
Lp - Low pressure

LIVESTOCK INTENSITY

Intensive facilities
Specialized structures designed for confined feeding at high stocking density

* Feedlot / stockyard
An enclosed area for intensive livestock confinement - usually with numerous tightly paddocks and corrals

Non intensive
Non intensive barn, corrals, paddocks, field and pasture fencing

LIVESTOCK HOMESITE

Homesites
Primary location of the farm where most livestock management occurs - location of main ranch or main barn, corrals, paddocks, barns, and feeding/watering facilities, as well as the farm residence

? Non homesite
Location where livestock are present but related infrastructure is minimal - often only pasture fencing and watering. Used for pasturing livestock and is secondary to an operator's primary or homesite location.

LIVESTOCK TYPE

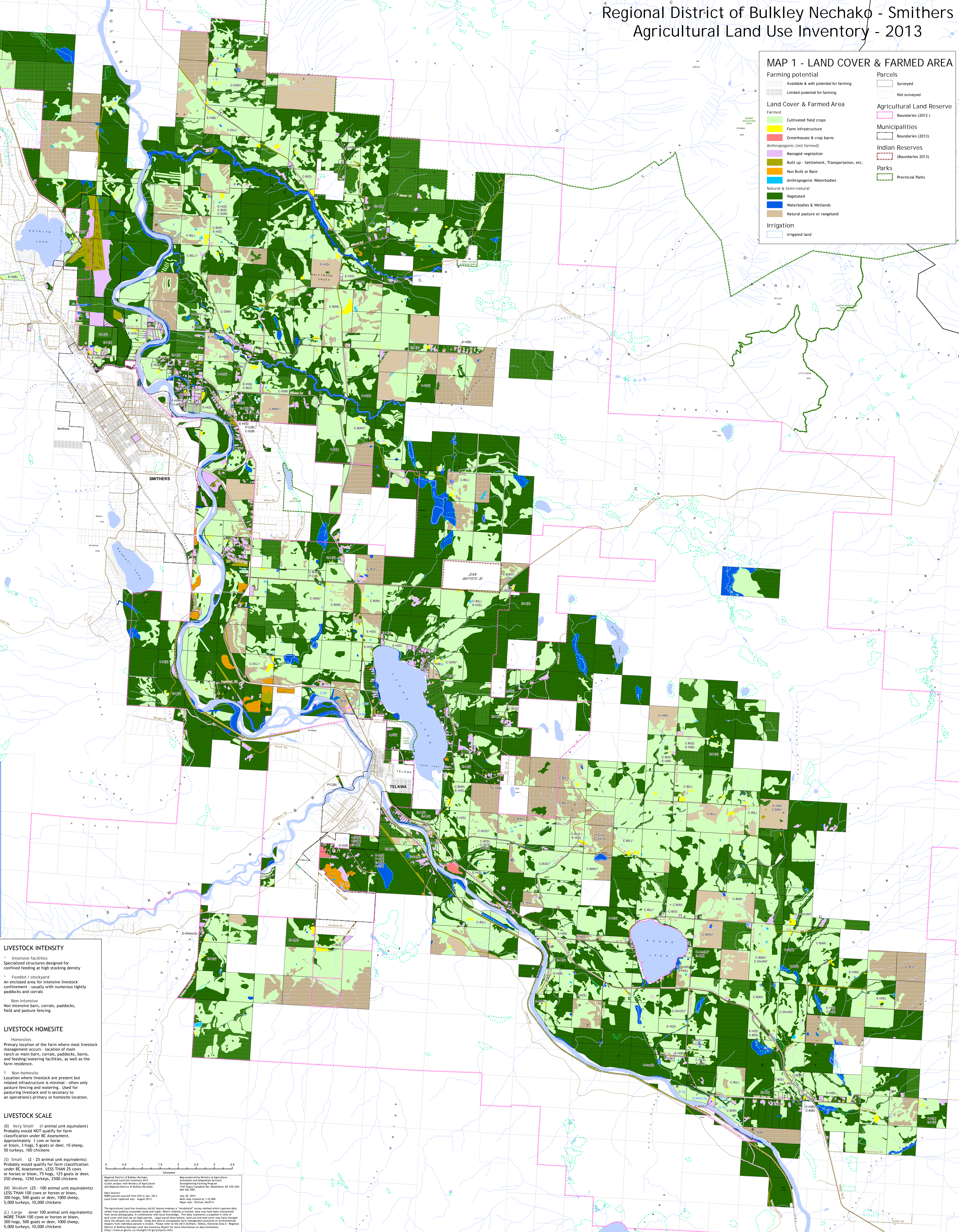
Group - Type	Name
C	Conventional livestock
D	Dairy
M	Milking
B	Beef
Cw	Cow / calf
Sl	Sheep / lamb
G	Goat
La	Llama
P	Poultry
Ch	Chicken
E	Equines
H	Horse
Mh	Miniature horse
D	Donkey
Api	Apiculture (bees)

LIVESTOCK SCALE

(S) Very Small (1 animal unit equivalent)
Probably would NOT qualify for farm classification under BC Assessment.
Approximately 1 cow or horse, 10 sheep, 50 hogs, 100 chickens

(M) Medium (25 - 100 animal unit equivalents)
Probably would qualify for farm classification under BC Assessment. LESS THAN 25 cows or horses or bison, 75 hogs, 125 goats or deer, 250 sheep, 1250 turkeys, 2500 chickens

(L) Large (over 100 animal unit equivalents)
MORE THAN 100 cows or horses or bison, 300 hogs, 500 goats or deer, 1000 sheep, 5,000 turkeys, 10,000 chickens



Regional District of Bulkley Nechako
Agricultural Land Use Inventory 2013
A joint project with the Ministry of Agriculture and Food, British Columbia
and the Regional District of Bulkley Nechako.

Also produced by Ministry of Agriculture
Innovation and Adaptation Services
1100 West Broadway, Victoria, BC V8M 2M2
(250) 383-3000

Date Sources:
Soil data sources from ICES in Jan. 2013.
Land Cover (remote data) August 2012.
Aerial Photo - Photosat 342/300
July 30, 2014

The Agricultural Land Use Inventory (ALUI) system employs a "weighted" scoring method which captures data visible from publicly accessible lands and roads. Where visibility is limited, data may have been interpreted from aerial photography in combination with local knowledge. This data represents a snapshot in time of land cover and land use on legal parcels. Legal parcel descriptions, land use and land cover may have changed since the dataset was collected. Users are encouraged to verify measurements on ground or through environmental data from other sources. Users are also encouraged to verify measurements on ground or through environmental data from other sources. Users are also encouraged to verify measurements on ground or through environmental data from other sources.

Regional District of Bulkley Nechako Land Use Inventory Report for more information on data limitations.
http://www.agriculture.gov.bc.ca/landuse/