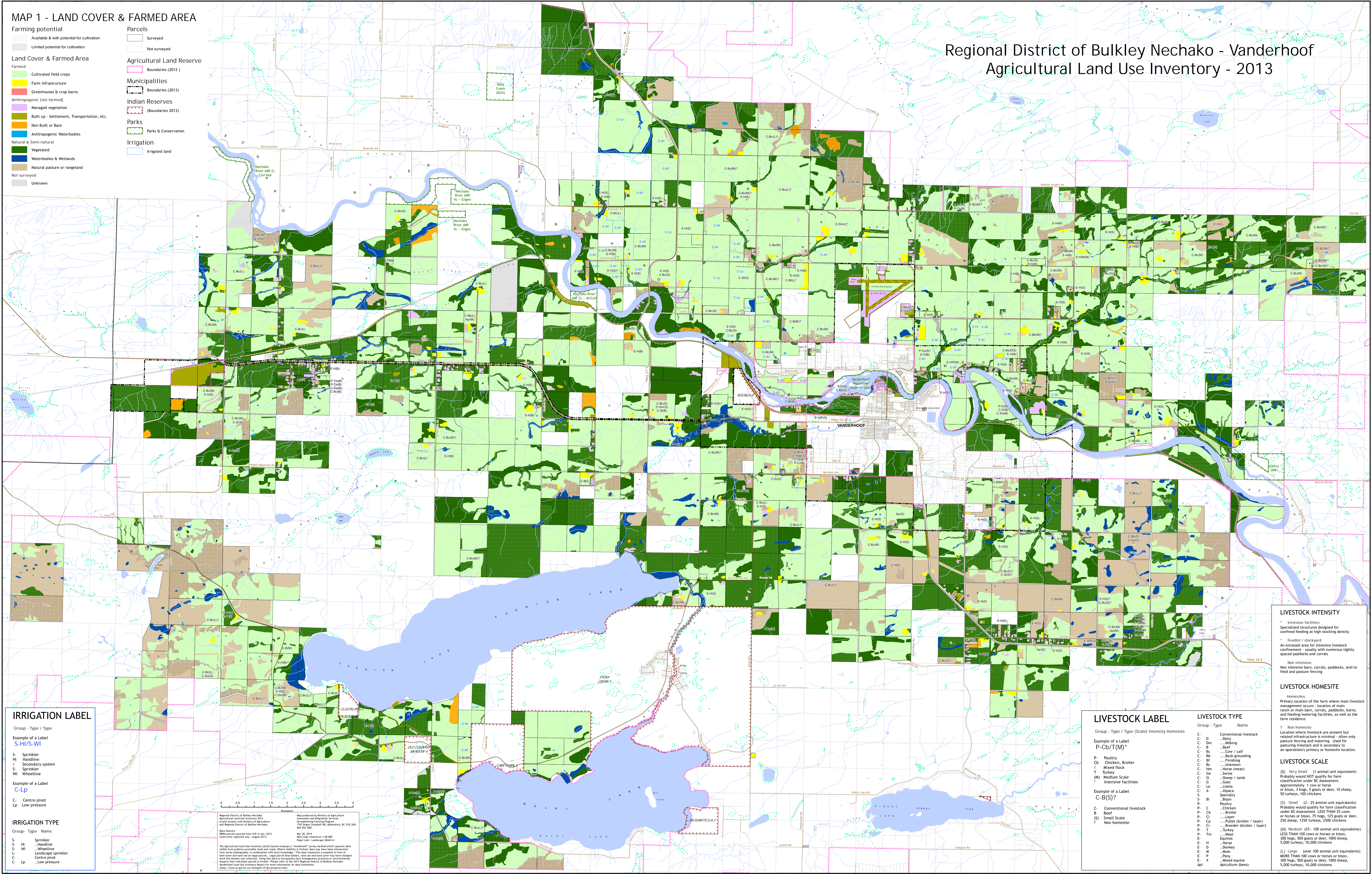


MAP 1 - LAND COVER & FARMED AREA

- Farming potential**
- Available & with potential for cultivation
 - Limited potential for cultivation
- Land Cover & Farmed Area**
- Farmed**
- Cultivated field crops
 - Farm infrastructure
 - Greenhouses & crop barns
- Anthropogenic (not farmed)**
- Managed vegetation
 - Built up - Settlement, Transportation, etc.
 - Non Built or Bare
- Anthropogenic Waterbodies**
- Vegetated
 - Waterbodies & Wetlands
 - Natural pasture or rangeland
- Not surveyed**
- Unknown
- Parcels**
- Surveyed
 - Not surveyed
- Agricultural Land Reserve**
- Boundaries (2012)
- Municipalities**
- Boundaries (2013)
- Indian Reserves**
- Boundaries (2013)
- Parks**
- Parks & Conservation
- Irrigation**
- Irrigated land

Regional District of Bulkley Nechako - Vanderhoof
Agricultural Land Use Inventory - 2013



IRRIGATION LABEL

Group - Type / Type

Example of a Label
S-HI/S-WI

S - Sprinkler
HI - Handline / Secondary system
S - Sprinkler
WI - Wheelline

Example of a Label
C-Lp

C - Centre pivot
Lp - Low pressure

IRRIGATION TYPE

Group - Type Name

S - Sprinkler
S - HI - Handline
S - WI - Wheelline
Lp - Landscape sprinkler
C - Centre pivot
Lp - Low pressure

LIVESTOCK LABEL

Group - Type / Type (Scale) Intensity Homestead

Example of a Label
P-Cb/T(M)*

P - Poultry
Cb - Chicken, Broiler
M - Mixed flock
T - Turkey
M - Medium Scale
Intensive facilities

Example of a Label
C-B(S)?

C - Conventional livestock
B - Beef
S - Small Scale
? - Non homestead

LIVESTOCK TYPE

Group - Type Name

C - Conventional livestock
D - Dairy
C - Dm - ...Milk
C - B - ...Beef
C - Bc - ...Cow / calf
C - Bb - ...Back grounding
C - Bf - ...Finishing
C - Bs - ...Unknown
C - Hm - ...Horse (meat)
C - Sw - ...Swine
C - Sl - ...Sheep / lamb
C - G - ...Goat
C - La - ...Llama
C - A - Alpaca
S - Specialty
S - Bi - ...Bison
P - Poultry
P - C - ...Chicken
P - Cb - ...Broiler
P - Cl - ...Layer
P - Cp - ...Pullet (broiler / layer)
P - Cd - ...Breeder (broiler / layer)
P - T - Turkey
P - Tm - ...Meat
E - Equines
E - D - Donkey
E - H - Horse
E - M - Mule
E - P - Pony
E - A - Mixed equine
Apl - Apiculture (bees)

LIVESTOCK INTENSITY

Intensive facilities
Specialized structures designed for confined feeding at high stocking density
Feedlot / stockyard
An enclosed area for intensive livestock confinement - usually with numerous tightly spaced paddocks and corrals
Non intensive
Non intensive barn, corrals, paddocks, and/or field and pasture fencing

LIVESTOCK HOMESTEAD

Homestead
Primary location of the farm where most livestock management occurs - location of main ranch or main barn, corrals, paddocks, barns, and feeding/watering facilities, as well as the farm residence.
7 - Non homestead
Location where livestock are present but related infrastructure is minimal - often only pasture fencing and watering. Used for pasturing livestock and is secondary to an operator's primary or homestead location.

LIVESTOCK SCALE

(B) Very Small (1 animal unit equivalent)
Probably would NOT qualify for farm classification under BC Assessment, LESS THAN 25 cows or horses or bison, 75 hogs, 125 goats or deer, 250 sheep, 1250 turkeys, 2500 chickens
(S) Small (25 - 100 animal unit equivalent)
Probably would qualify for farm classification under BC Assessment, LESS THAN 25 cows or horses or bison, 300 hogs, 500 goats or deer, 1000 sheep, 5,000 turkeys, 10,000 chickens
(M) Medium (25 - 100 animal unit equivalent)
Probably would qualify for farm classification under BC Assessment, LESS THAN 25 cows or horses or bison, 300 hogs, 500 goats or deer, 1000 sheep, 5,000 turkeys, 10,000 chickens
(L) Large (over 100 animal unit equivalent)
MORE THAN 100 cows or horses or bison, 300 hogs, 500 goats or deer, 1000 sheep, 5,000 turkeys, 10,000 chickens

Regional District of Bulkley Nechako
Agricultural Land Use Inventory 2013
A joint project with Ministry of Agriculture
and Rural Development, British Columbia
Data Source:
RSR parcels sourced from IDS in Jan. 2013.
Land Cover captured July - August 2013.
Map 30, 2014
Map 30, created at 1:10,000
Printed at: Cambridge, British Columbia

The Agricultural Land Use Inventory (ALUI) System employs a "weighted" survey method which captures data visible from publicly accessible lands and roads. Where visibility is limited, data may have been interpreted from aerial photography in conjunction with local knowledge. This data represents a subjective estimate of land cover and land use on rural parcels. Land parcel ownership, land use and land cover may have changed since the most recent survey. Users of this data are encouraged to verify information for their own purposes. The Vanderhoof Agricultural Land Use Inventory Report for more information on data limitations.
<http://www.agric.gov.bc.ca/research/landuseinventory.html>