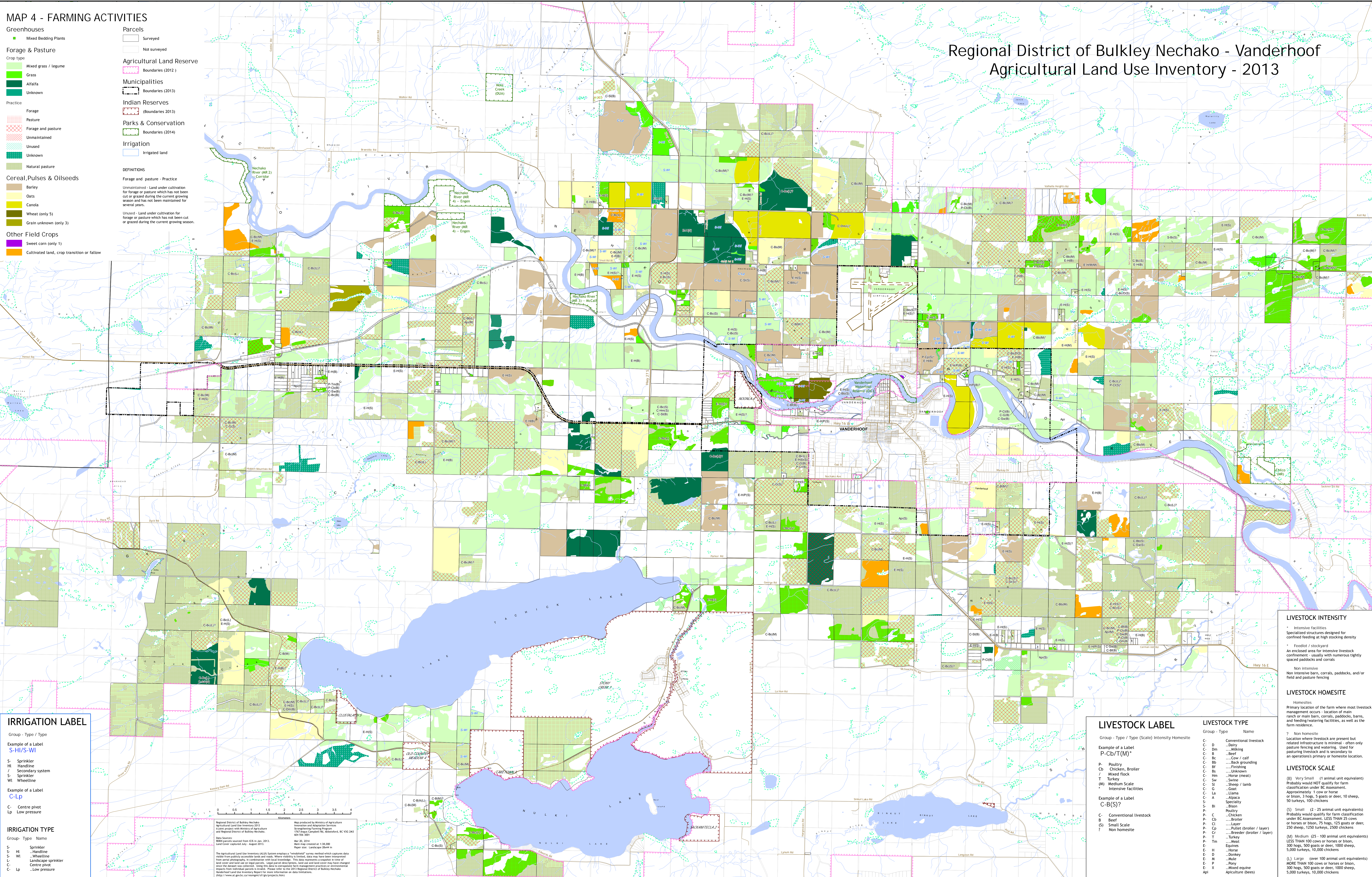


MAP 4 - FARMING ACTIVITIES

- Greenhouses**
 - Mixed Bedding Plants
- Forage & Pasture**
 - Mixed grass / legume
 - Grass
 - Alfalfa
 - Unknown
- Practice**
 - Forage
 - Pasture
 - Forage and pasture
 - Unmaintained
 - Unused
 - Unknown
 - Natural pasture
- Cereal, Pulses & Oilseeds**
 - Barley
 - Oats
 - Canola
 - Wheat (only 5)
 - Grain unknown (only 3)
- Other Field Crops**
 - Sweet corn (only 1)
 - Cultivated land, crop transition or fallow
- Parcels**
 - Surveyed
 - Not surveyed
- Agricultural Land Reserve**
 - Boundaries (2012)
- Municipalities**
 - Boundaries (2013)
- Indian Reserves**
 - Boundaries (2013)
- Parks & Conservation**
 - Boundaries (2014)
- Irrigation**
 - Irrigated land

DEFINITIONS
 Forage and pasture - Practice
 Unmaintained - Land under cultivation for forage or pasture which has not been cut or grazed during the current growing season and has not been maintained for several years.
 Unused - Land under cultivation for forage or pasture which has not been cut or grazed during the current growing season.

Regional District of Bulkley Nechako - Vanderhoof
 Agricultural Land Use Inventory - 2013



IRRIGATION LABEL

Group - Type / Type

Example of a Label
S-HI/S-WI

- S - Sprinkler
- HI - Handline
- / - Secondary system
- S - Sprinkler
- WI - Wheelline

Example of a Label
C-Lp

- C - Centre pivot
- Lp - Low pressure

IRRIGATION TYPE

Group - Type Name

- S - Sprinkler
- HI - Handline
- WI - Wheelline
- LS - Landscape sprinkler
- C - Centre pivot
- Lp - Low pressure

Regional District of Bulkley Nechako
 Agricultural Land Use Inventory
 A joint project with Ministry of Agriculture
 and Food of British Columbia
 Data Source: 1998 parcels sourced from ICIS in Jan. 2013.
 Land Cover: Land Use - April 2013
 Map 30, 2014
 Map No. created at 1:18,000
 Project No. 2013-0001-0001-0001
 The Agricultural Land Use Inventory (ALUI) System employs a "web-based" survey method which captures data visible from publicly accessible lands and roads. Where visibility is limited, data may have been interpreted from aerial photography in conjunction with local knowledge. This data represents a snapshot in time of land cover and land use on rural parcels. Land parcels, crop types, land use and land cover may have changed since the date of the survey. Users of this inventory should be aware of the limitations of the data and the Regional District of Bulkley Nechako Agricultural Land Use Inventory Report for more information on data limitations.
<http://www.agric.gov.bc.ca/research/ali/ali.html>

LIVESTOCK INTENSITY

- Intensive facilities
Specialized structures designed for confined feeding at high stocking density
- Facility / stockyard
An enclosed area for intensive livestock confinement - usually with numerous tightly spaced paddocks and corrals
- Non intensive
Non intensive barns, corrals, paddocks, and/or field and pasture fencing

LIVESTOCK HOMESITE

Homesites
Primary location of the farm where most livestock management occurs - location of main ranch or main barn, corrals, paddocks, barns, and feeding/watering facilities, as well as the farm residence.

7 - Non homesite
Location where livestock are present but related infrastructure is minimal - often only pasture fencing and watering. Used for pasturing livestock and is secondary to an operation's primary or homesite location.

LIVESTOCK SCALE

(B) Very Small (1 animal unit equivalent)
Probably would NOT qualify for farm classification under BC Assessment.
Approximately 1 cow or horse or bison, 3 pigs, 5 goats or deer, 10 sheep, 50 turkeys, 100 chickens

(S) Small (2 - 25 animal unit equivalent)
Probably would qualify for farm classification under BC Assessment. LESS THAN 25 cows or horses or bison, 75 hogs, 125 goats or deer, 250 sheep, 1250 turkeys, 2500 chickens

(M) Medium (25 - 100 animal unit equivalent)
Probably would qualify for farm classification under BC Assessment. LESS THAN 100 cows or horses or bison, 300 hogs, 500 goats or deer, 1000 sheep, 5,000 turkeys, 10,000 chickens

(L) Large (over 100 animal unit equivalent)
MORE THAN 100 cows or horses or bison, 300 hogs, 500 goats or deer, 1000 sheep, 5,000 turkeys, 10,000 chickens

LIVESTOCK LABEL

Group - Type / Type (Scale) Intensity Homesite

Example of a Label
P-Cb/T(M)*

- P - Poultry
- Cb - Chicken, Broiler
- / - Mixed flock
- T - Turkey
- (M) - Medium Scale
- Intensive facilities

Example of a Label
C-B(S)?

- C - Conventional livestock
- B - Beef
- (S) - Small Scale
- ? - Non homesite

LIVESTOCK TYPE

Group - Type Name

- C - Conventional livestock
- D - Dairy
- Cm - Milk
- B - Beef
- Cc - Cow / calf
- Cb - Back grounding
- Bf - Finishing
- Cs - Unknown
- Cm - Horse (meat)
- Sw - Sheep / lamb
- SL - Goat
- CL - llama
- LA - Alpaca
- SA - Specialty
- Bi - Bison
- P - Poultry
- C - Chicken
- B - Broiler
- Sw - Layer
- CL - Pullet (broiler / layer)
- Cf - Breeder (broiler / layer)
- T - Turkey
- Pt - Meat
- Eq - Equines
- H - Horse
- D - Donkey
- M - Mule
- P - Pony
- E - Mixed equine
- Api - Apiculture (bees)