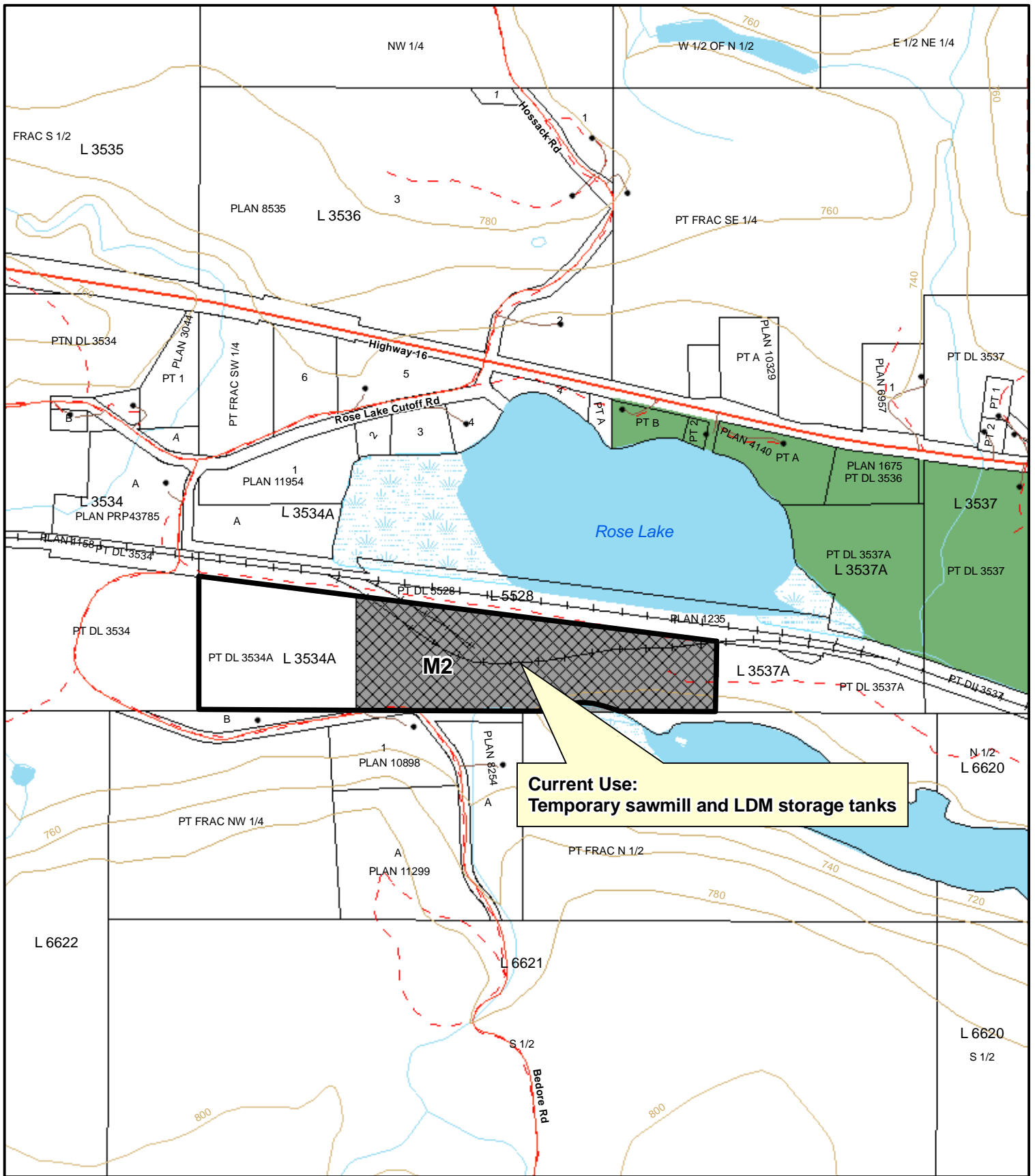


SCALE 1:10,000

## Appendix A: Existing Rural Industrial Lands

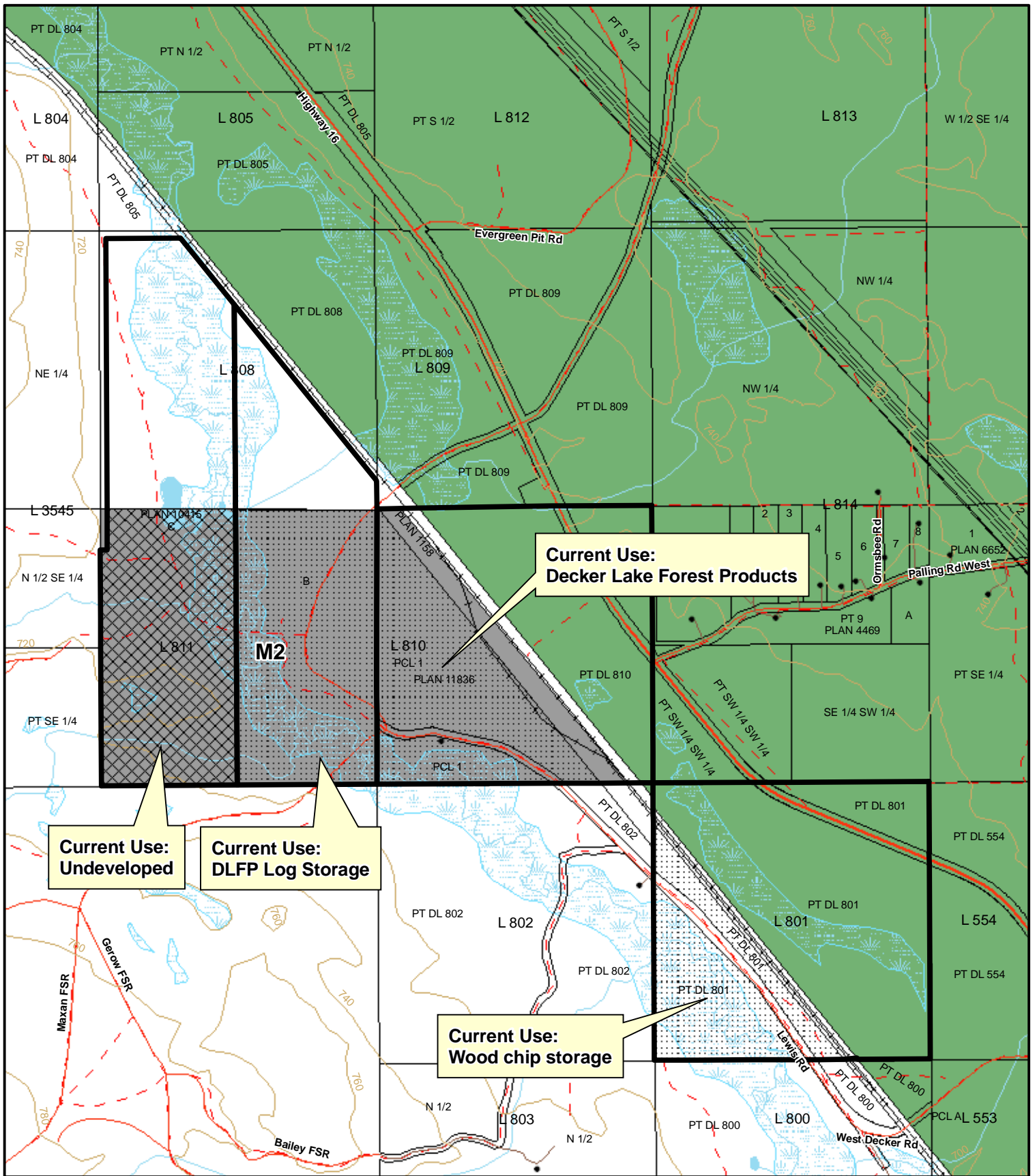


<b>Industrial Use</b>	Driveway	Railway	Municipalities	<b>Industrial Zoning</b>
Developed	Road	Hydro Lines	ALR	M1
Vacant	Highway	Cadastre	Provincial Parks	M2
Buildings	Forestry Road	Indian Reserves	Protected Areas	M3

SCALE 1:10,000

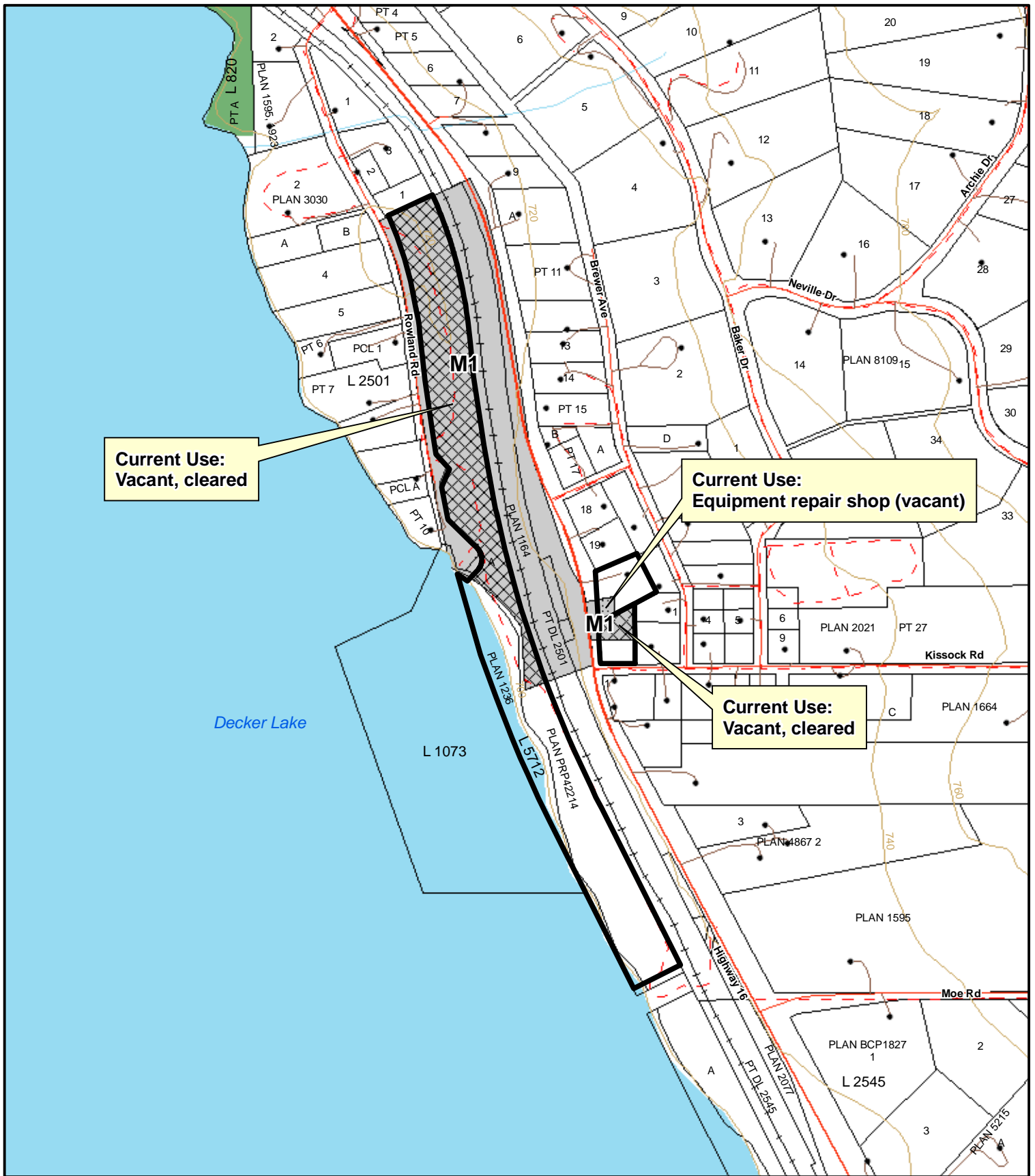


## Appendix A: Existing Rural Industrial Lands

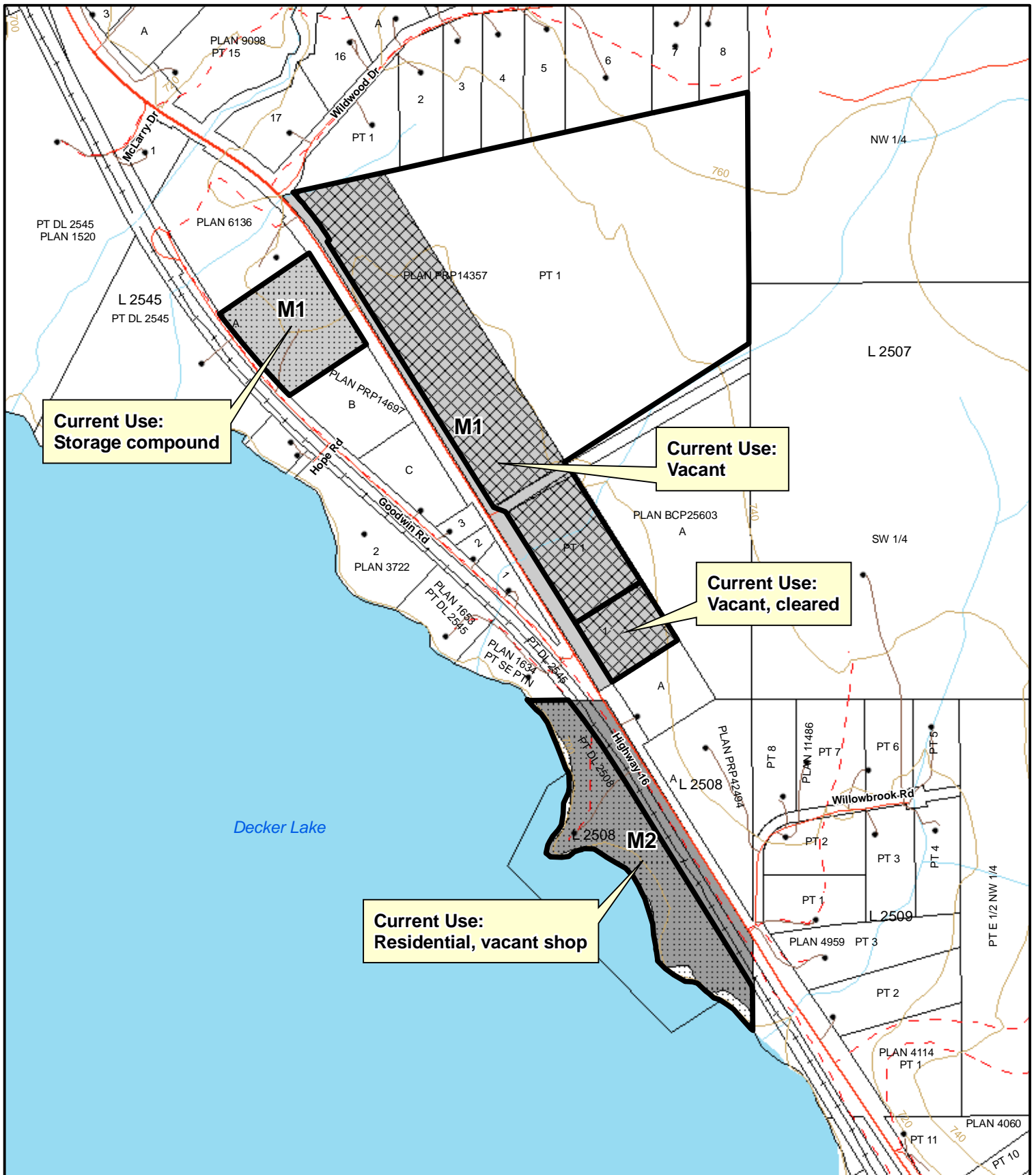


<b>Industrial Use</b>	Driveway	Railway	Municipalities	<b>Industrial Zoning</b>
Developed	Road	Hydro Lines	ALR	M1
Vacant	Highway	Cadastre	Provincial Parks	M2
Buildings	Forestry Road	Indian Reserves	Protected Areas	M3

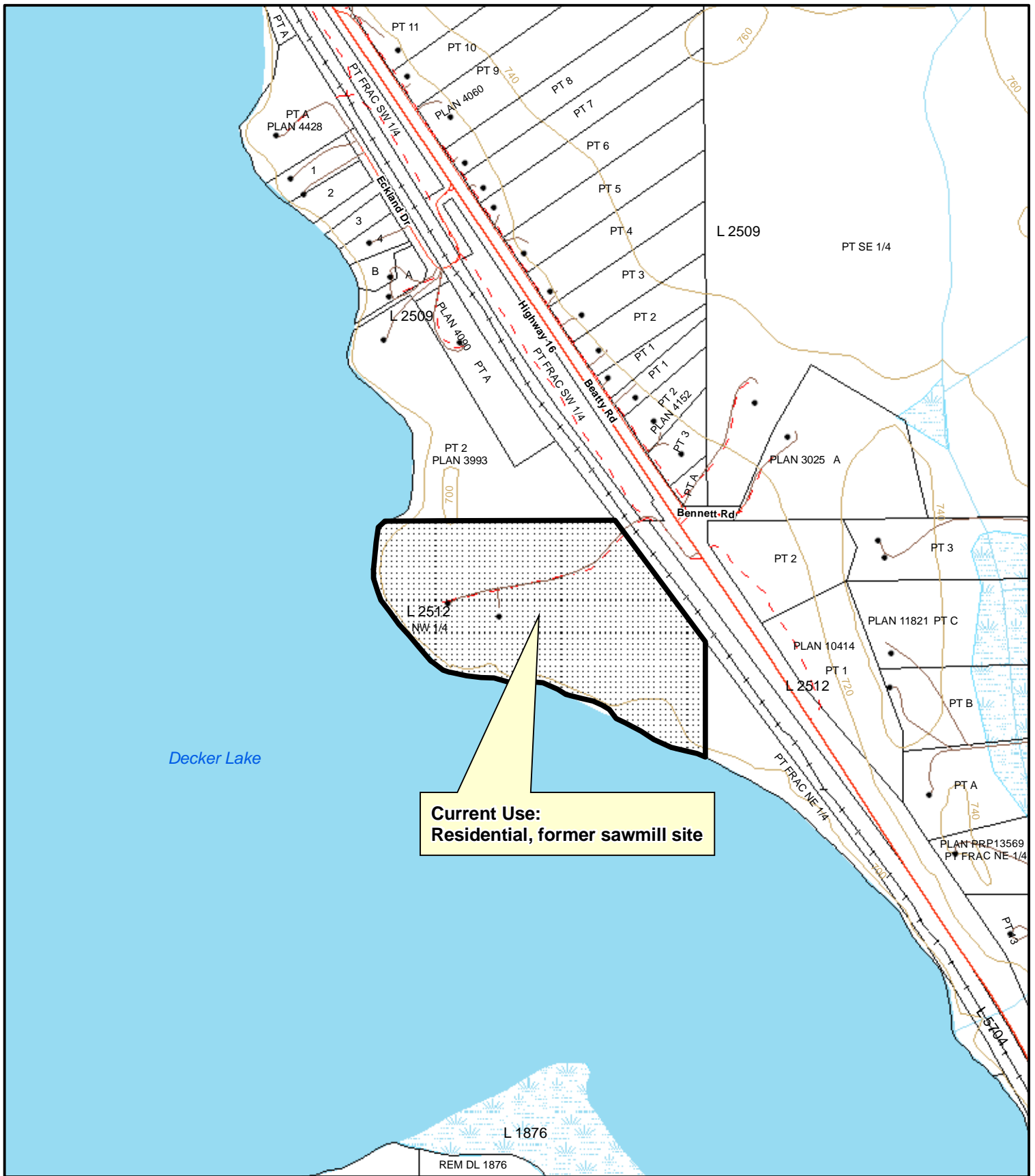
SCALE 1:15,000



SCALE 1:7,500



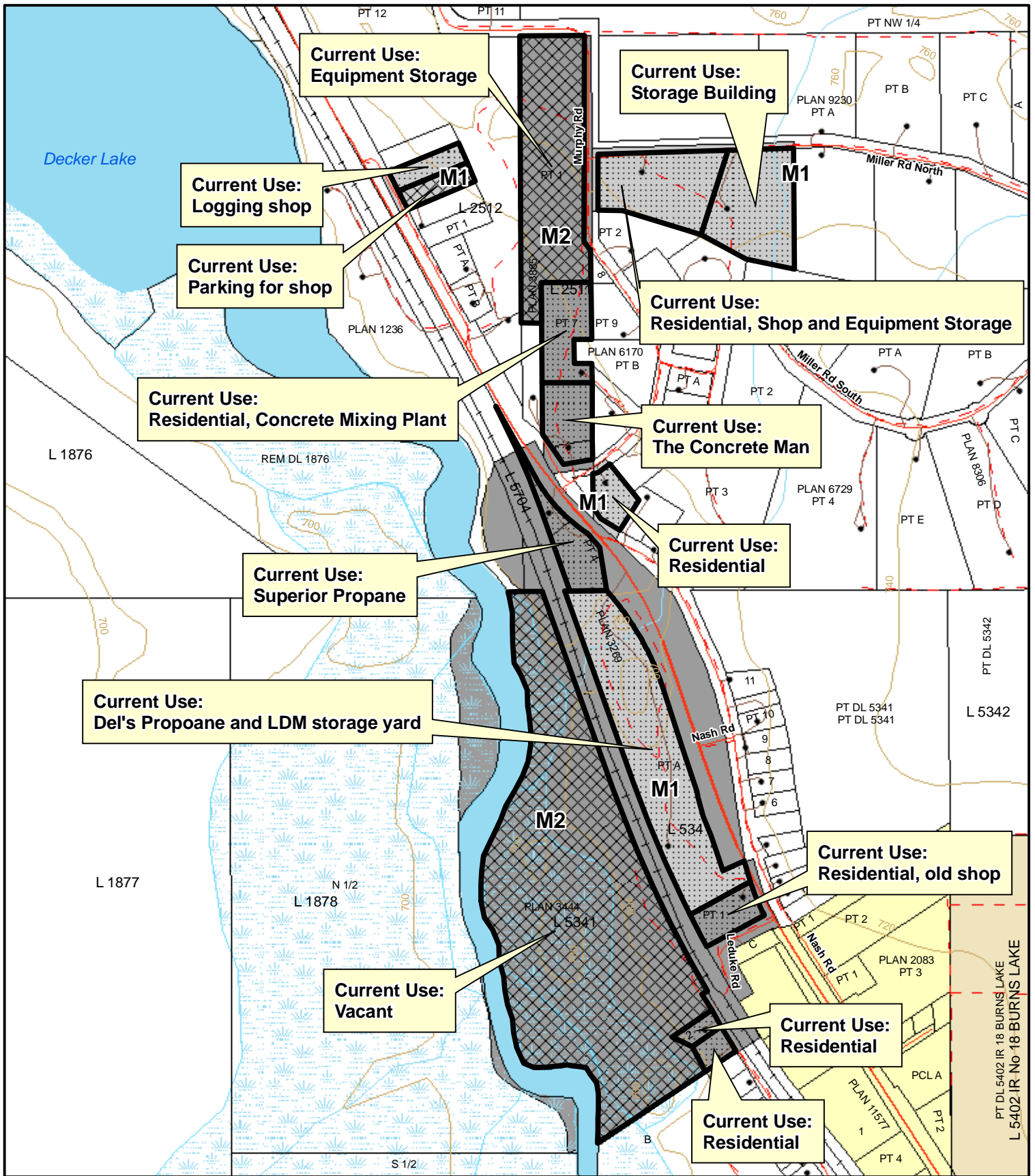
<b>Industrial Use</b>	Driveway	Railway	Municipalities	<b>Industrial Zoning</b>
Developed	Road	Hydro Lines	ALR	M1
Vacant	Highway	Cadastre	Provincial Parks	M2
Buildings	Forestry Road	Indian Reserves	Protected Areas	M3



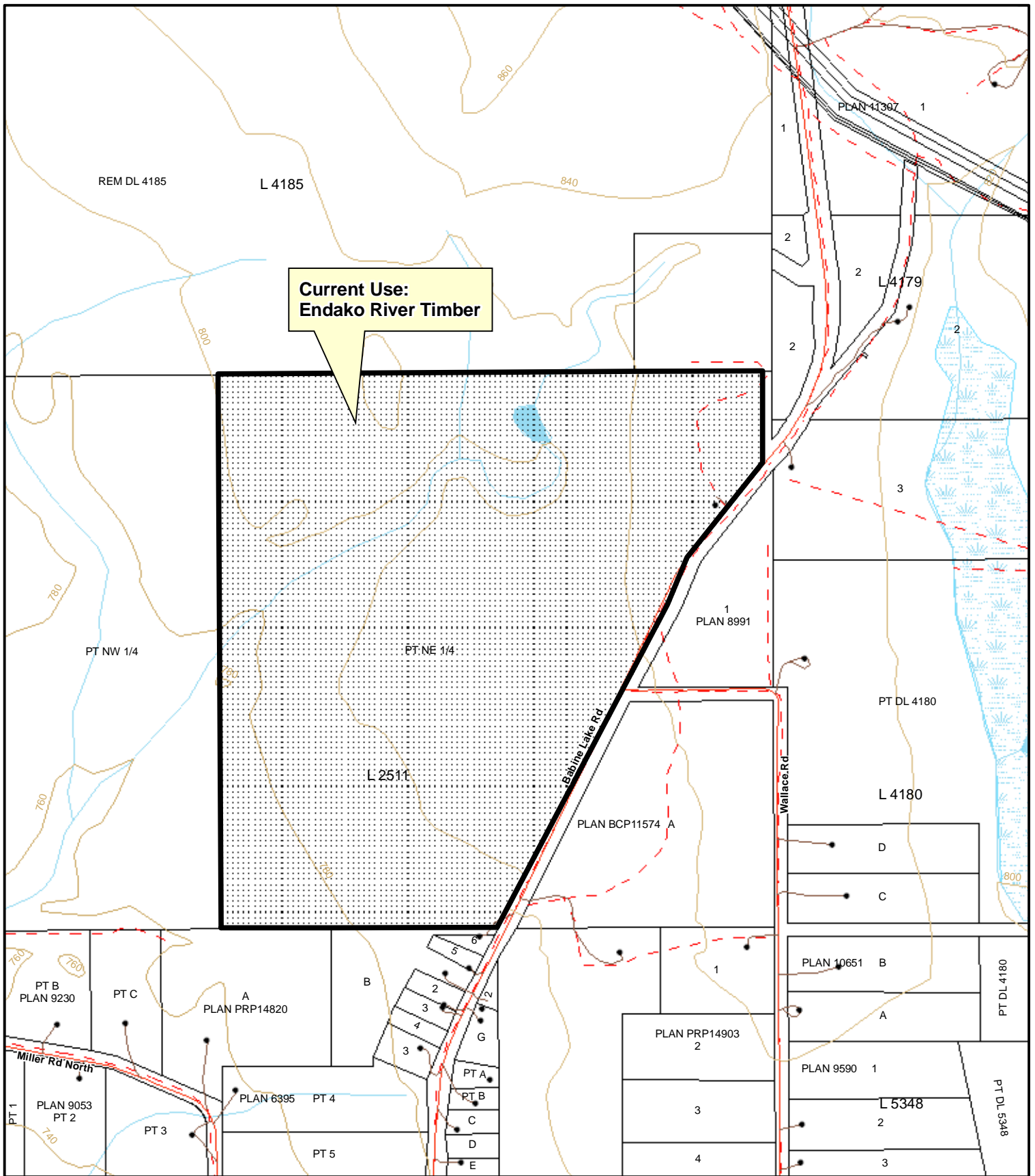
<b>Industrial Use</b>	Driveway	Railway	Municipalities	<b>Industrial Zoning</b>
Developed	Road	Hydro Lines	ALR	M1
Vacant	Highway	Cadastre	Provincial Parks	M2
Buildings	Forestry Road	Indian Reserves	Protected Areas	M3

SCALE 1:7,500







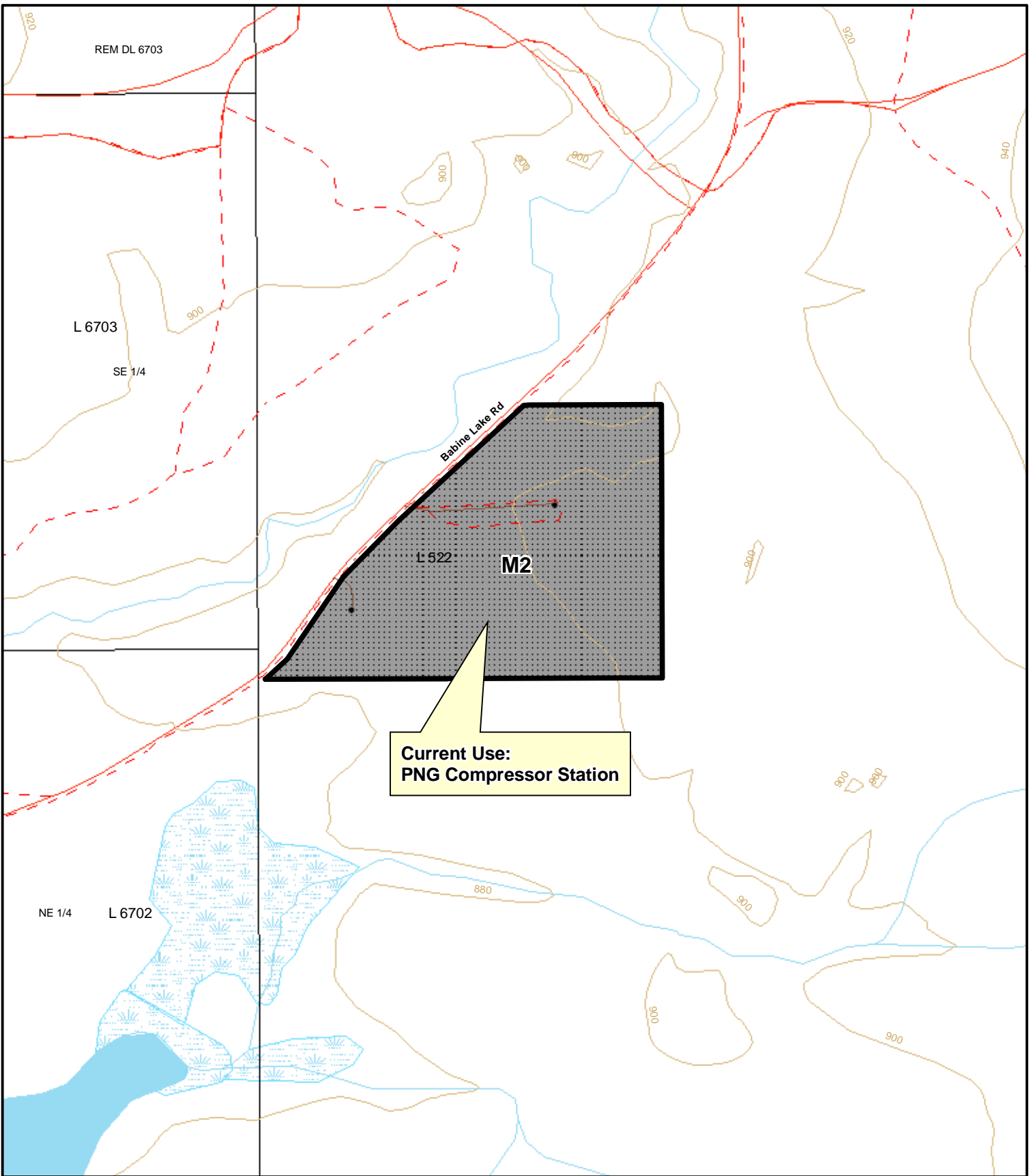


**Current Use:  
Endako River Timber**

- |                       |           |          |         |               |                 |     |                  |                 |                          |
|-----------------------|-----------|----------|---------|---------------|-----------------|-----|------------------|-----------------|--------------------------|
| <b>Industrial Use</b> | Developed | Road     | Highway | Forestry Road | Municipalities  | ALR | Provincial Parks | Protected Areas | <b>Industrial Zoning</b> |
| Vacant                | Buildings | Driveway | Railway | Hydro Lines   | Indian Reserves | M1  | M2               | M3              |                          |
|                       |           |          |         |               |                 |     |                  |                 |                          |

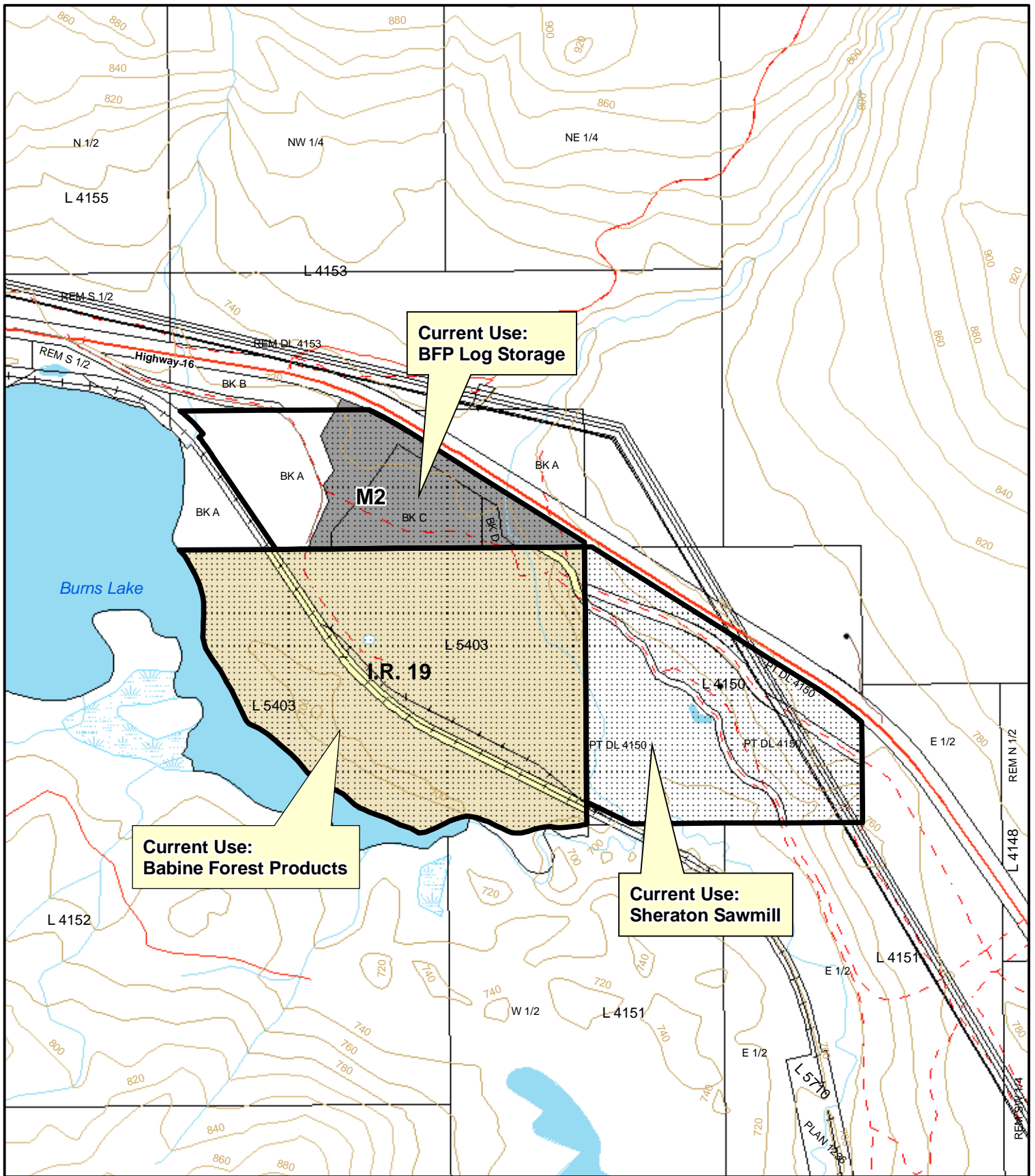
SCALE 1:7,500

## Appendix A: Existing Rural Industrial Lands



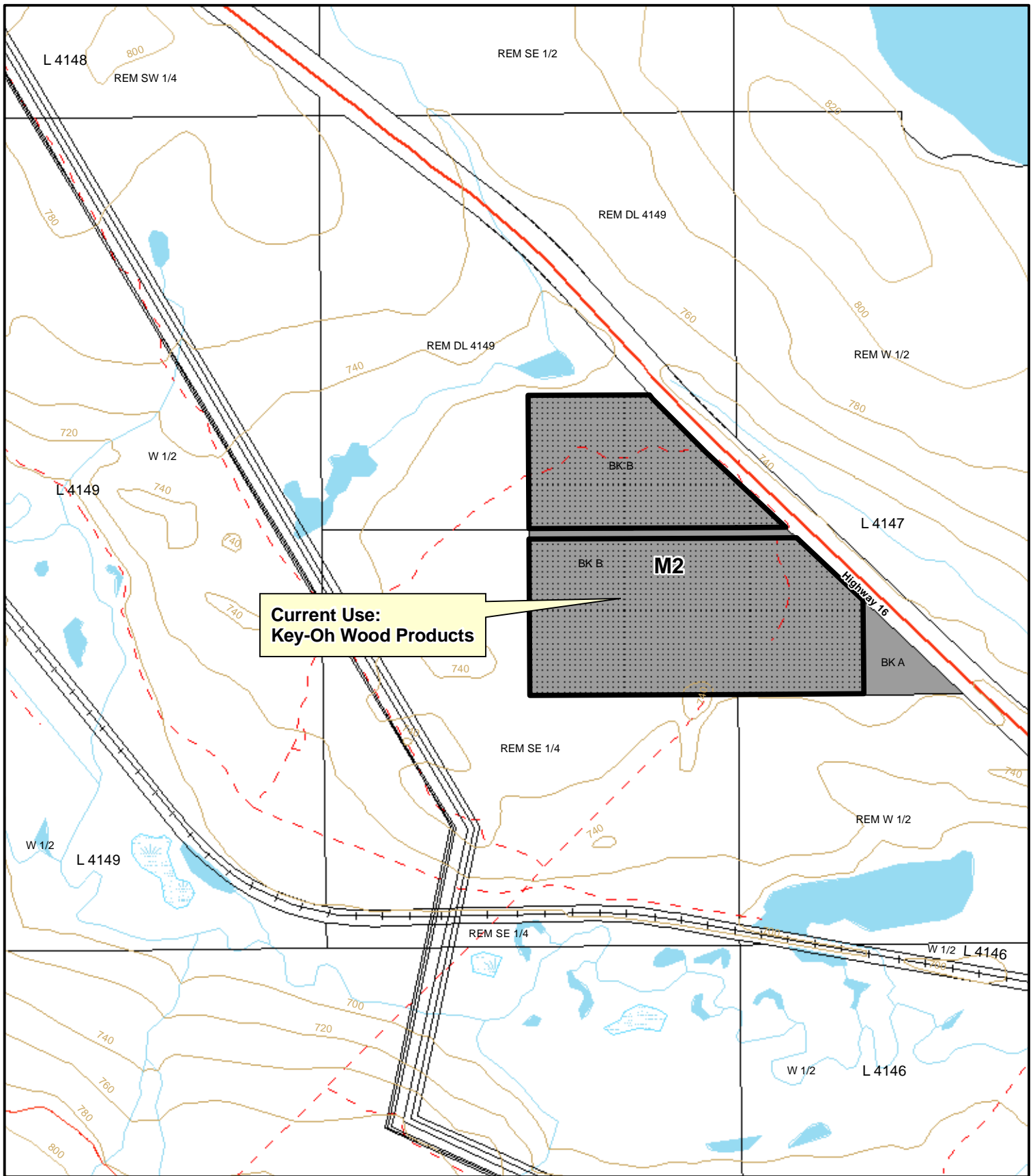
<b>Industrial Use</b>	Driveway	Railway	Municipalities	<b>Industrial Zoning</b>
Developed	Road	Hydro Lines	ALR	M1
Vacant	Highway	Cadastre	Provincial Parks	M2
Buildings	Forestry Road	Indian Reserves	Protected Areas	M3

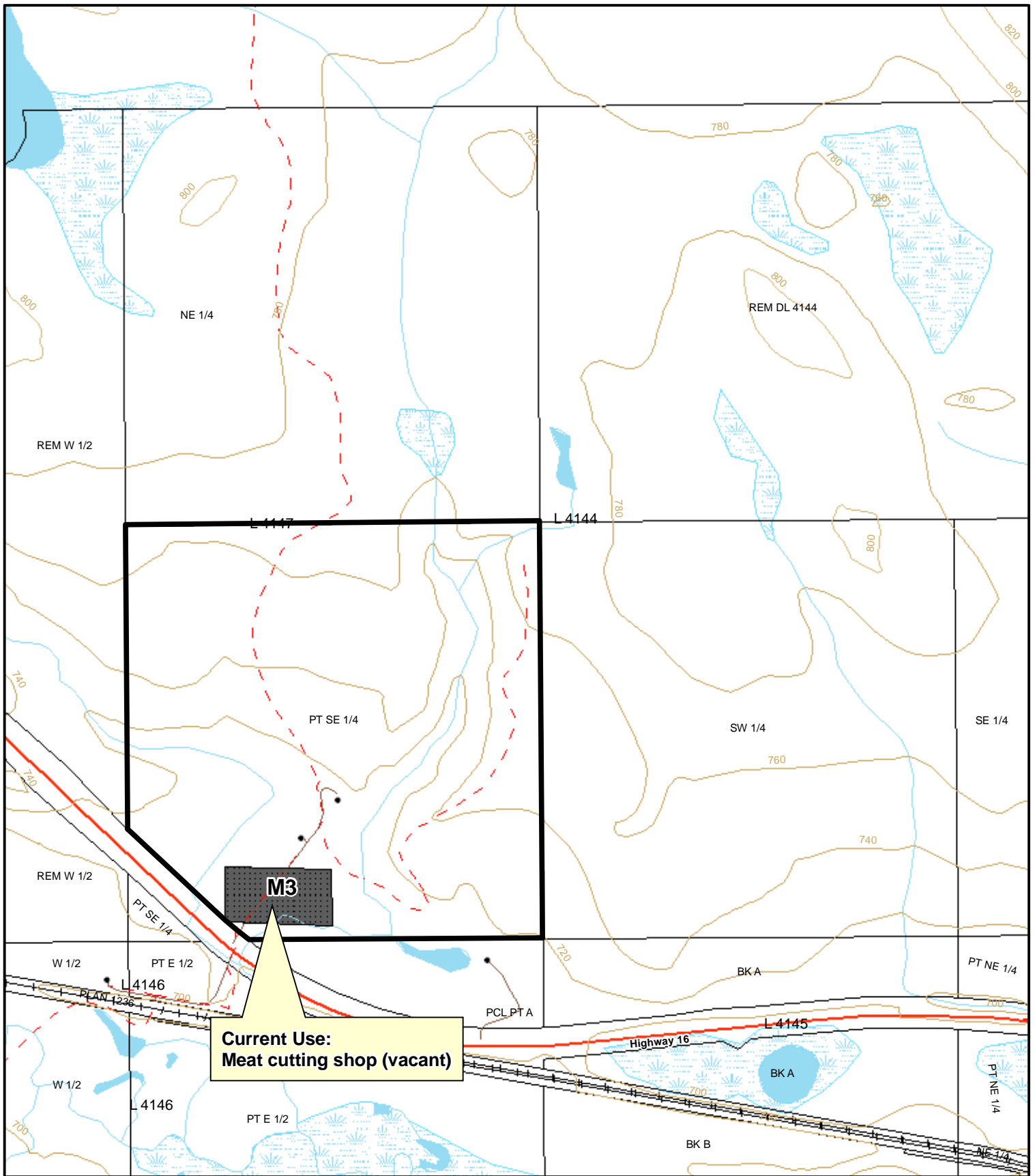
SCALE 1:7,500



<b>Industrial Use</b>	Driveway	Railway	Municipalities	<b>Industrial Zoning</b>
Developed	Road	Hydro Lines	ALR	M1
Vacant	Highway	Cadastre	Provincial Parks	M2
Buildings	Forestry Road	Indian Reserves	Protected Areas	M3







<b>Industrial Use</b>	Driveway	Railway	Municipalities	<b>Industrial Zoning</b>
Developed	Road	Hydro Lines	ALR	M1
Vacant	Highway	Cadastre	Provincial Parks	M2
Buildings	Forestry Road	Indian Reserves	Protected Areas	M3

SCALE 1:10,000